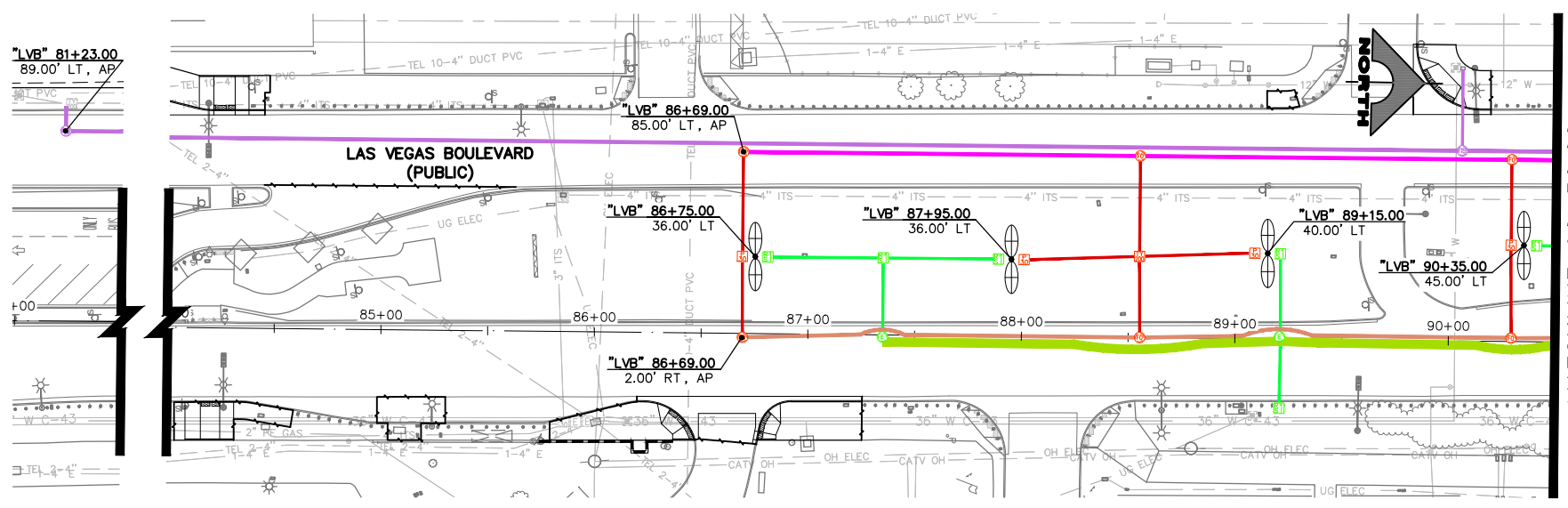
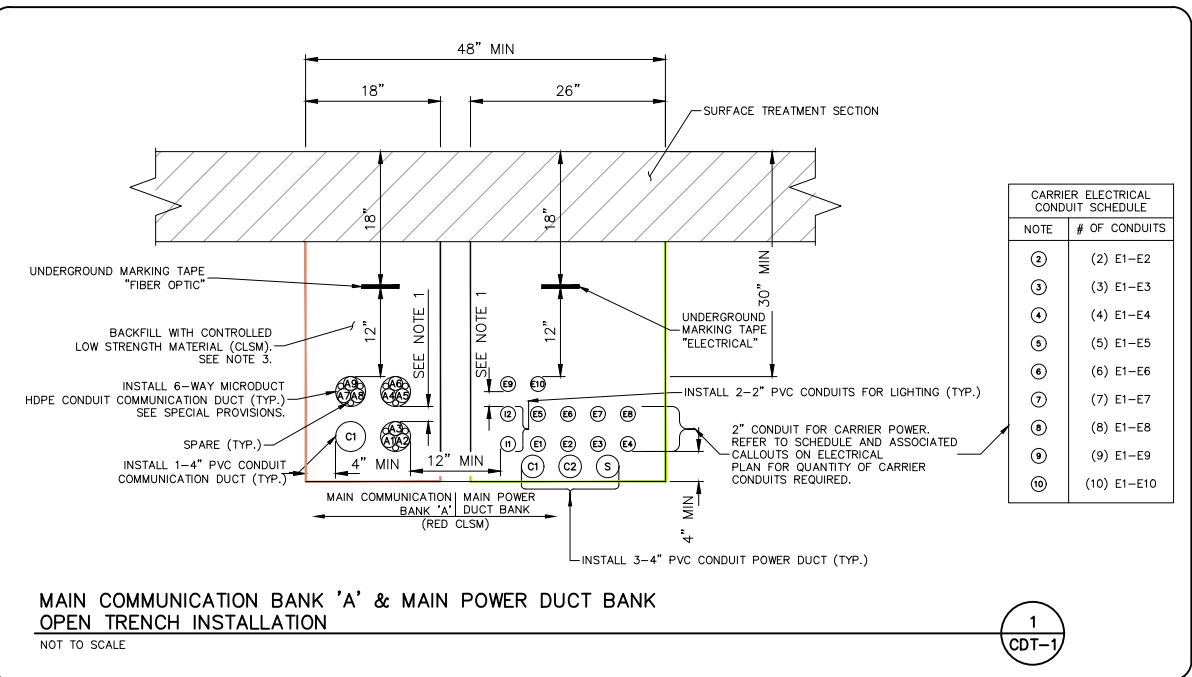


F:\Projects\500\500-897-LV\DWG\Exhibits\Communication Display Welcome Sign to Spring Mt\CommDisplayWelcomeSignToSpringMt.dwg

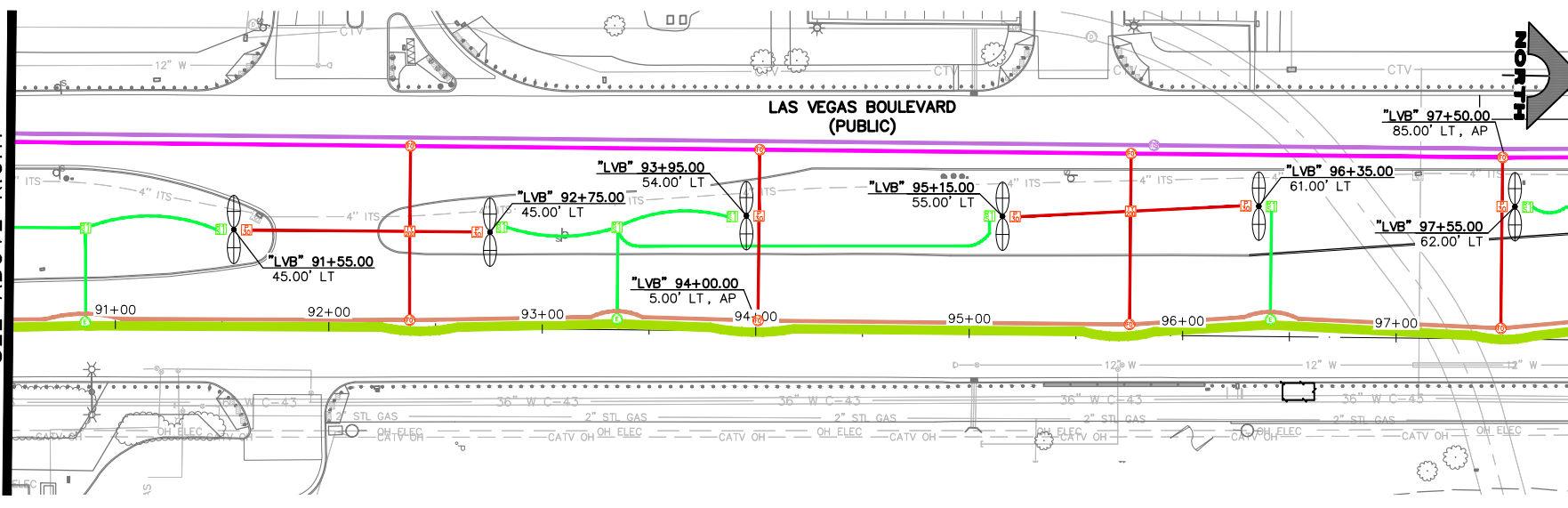


MATCHLINE 90+50.00  
SEE BELOW LEFT

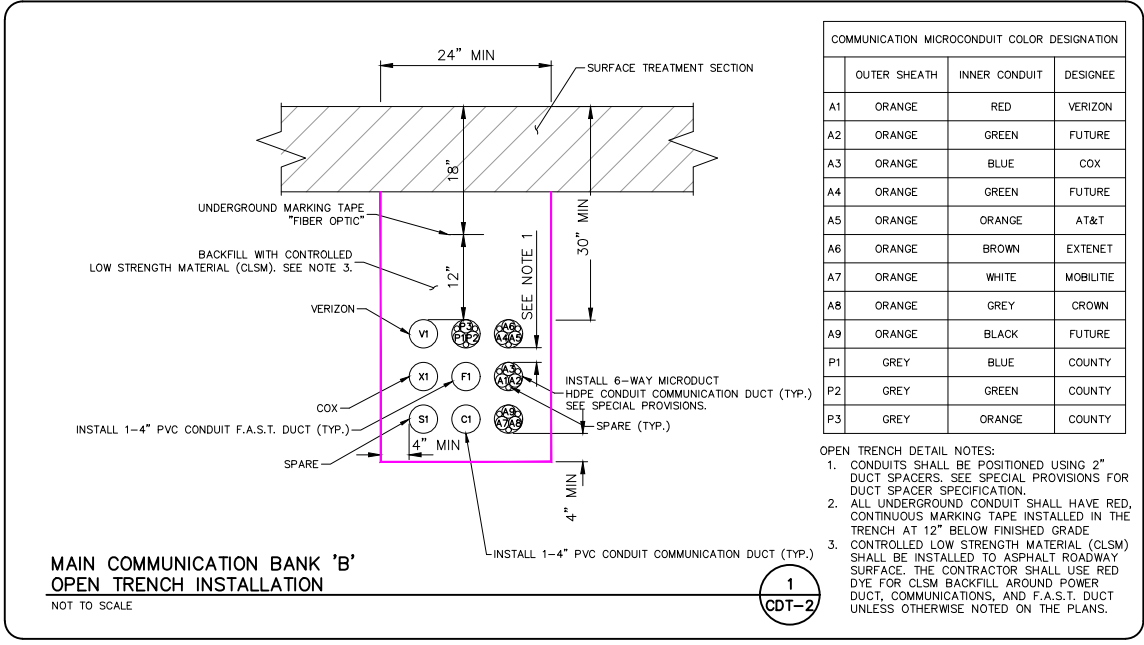


NOTE	# OF CONDUITS
②	(2) E1-E2
③	(3) E1-E3
④	(4) E1-E4
⑤	(5) E1-E5
⑥	(6) E1-E6
⑦	(7) E1-E7
⑧	(8) E1-E8
⑨	(9) E1-E9
⑩	(10) E1-E10

1  
CDT-1



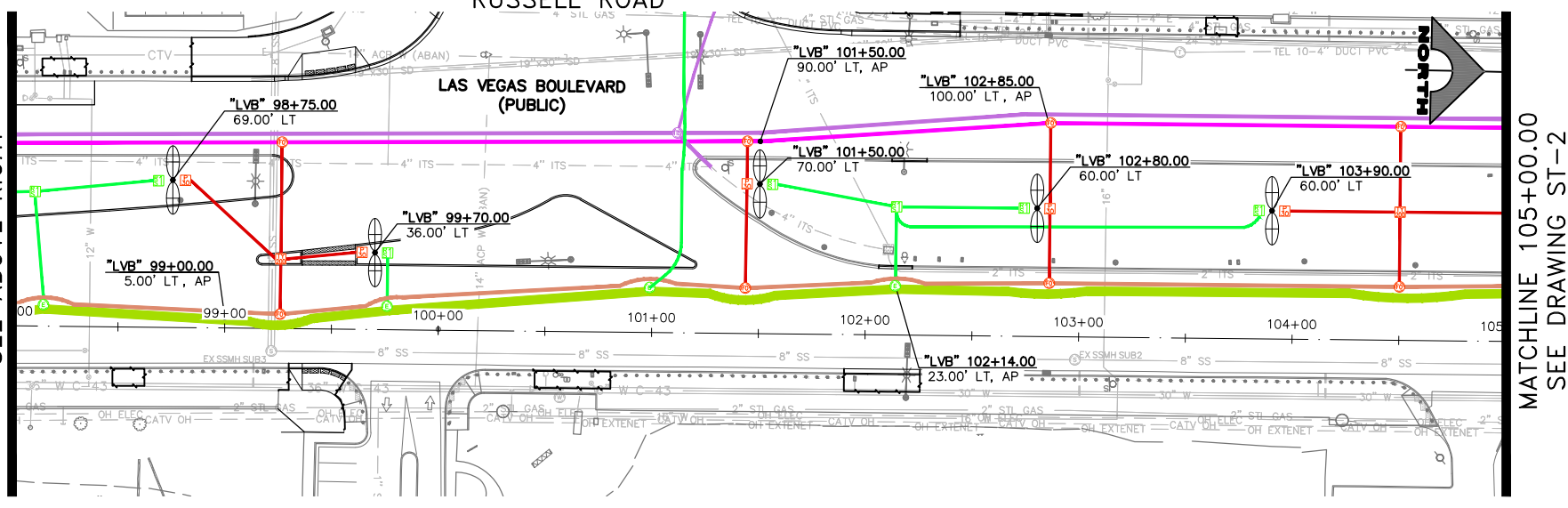
MATCHLINE 98+00.00  
SEE BELOW LEFT



OUTER SHEATH	INNER CONDUIT	DESIGNEE	
A1	ORANGE	RED	VERIZON
A2	ORANGE	GREEN	FUTURE
A3	ORANGE	BLUE	COX
A4	ORANGE	GREEN	FUTURE
A5	ORANGE	ORANGE	AT&T
A6	ORANGE	BROWN	EXTENET
A7	ORANGE	WHITE	MOBILITE
A8	ORANGE	GREY	CROWN
A9	ORANGE	BLACK	FUTURE
P1	GREY	BLUE	COUNTY
P2	GREY	GREEN	COUNTY
P3	GREY	ORANGE	COUNTY

- OPEN TRENCH DETAIL NOTES:
- CONDUITS SHALL BE POSITIONED USING 2" DUCT SPACERS. SEE SPECIAL PROVISIONS FOR DUCT SPACER SPECIFICATION.
  - ALL UNDERGROUND CONDUIT SHALL HAVE RED CONTINUOUS MARKING TAPE INSTALLED IN THE TRENCH AT 12" BELOW FINISHED GRADE.
  - CONTROLLED LOW STRENGTH MATERIAL (CLSM) SHALL BE INSTALLED TO ASPHALT ROADWAY SURFACE. THE CONTRACTOR SHALL USE RED DYE FOR CLSM BACKFILL AROUND POWER DUCT, COMMUNICATIONS, AND F.A.S.T. DUCT UNLESS OTHERWISE NOTED ON THE PLANS.

1  
CDT-2



MATCHLINE 105+00.00  
SEE DRAWING ST-2

- LEGEND**
- COMMUNICATION DUCT BANK 'A'
  - COMMUNICATIONS/POWER DUCT BANK
  - FAST DUCT BANK
  - COMMUNICATION DUCT BANK 'B'
  - POWER LATERAL
  - COMMUNICATIONS LATERAL



## LAS VEGAS BOULEVARD COMMUNICATION/POWER ALIGNMENT "LVB" 81+00 TO "LVB" 105+00 CLARK COUNTY, NEVADA, DEPARTMENT OF PUBLIC WORKS

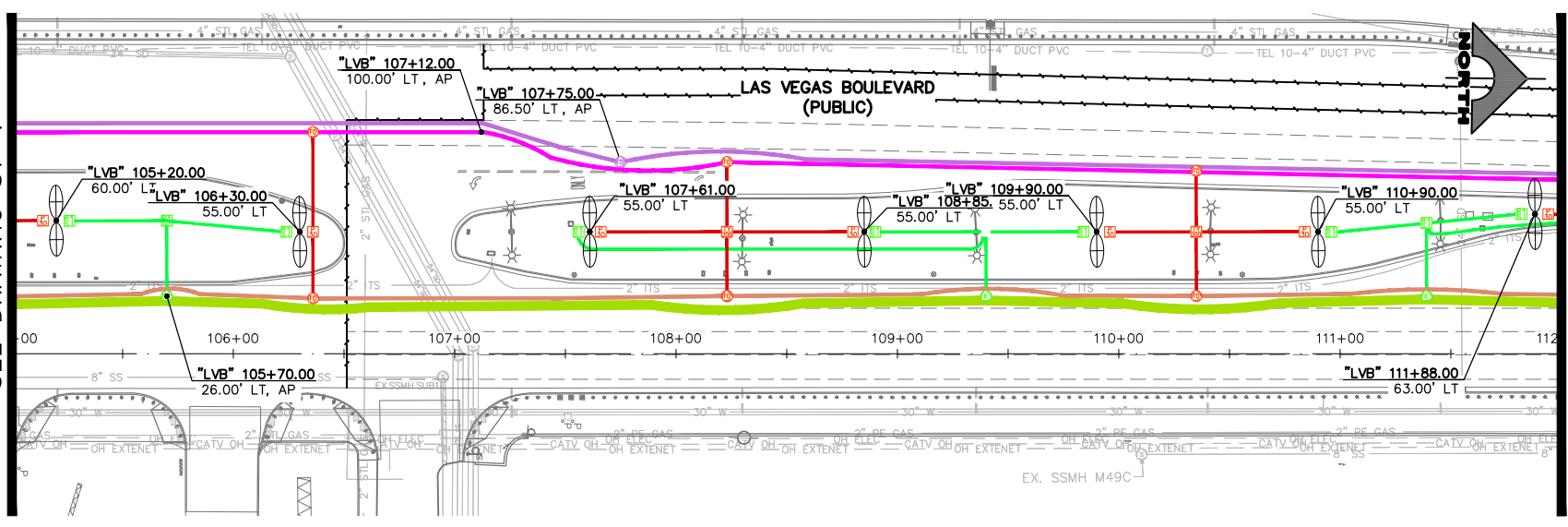
PROJECT No: 500-897-LV DRAWN BY: JAY  
DESIGNED BY: JAY CHECKED BY: TAM  
APPROVED BY: \_\_\_\_\_

**GCV** ENGINEERS SURVEYORS  
1555 S. RAINBOW BLVD.  
LAS VEGAS, NV 89146  
T: 702.804.2000  
F: 702.804.2299  
gcvengineering.com

SCALE	DRAWING NO.
HORIZ: 1" = 40'	ST-1
VERT: NONE	
FIELD BOOK	SHT. 1 OF 9
	L-XXXX

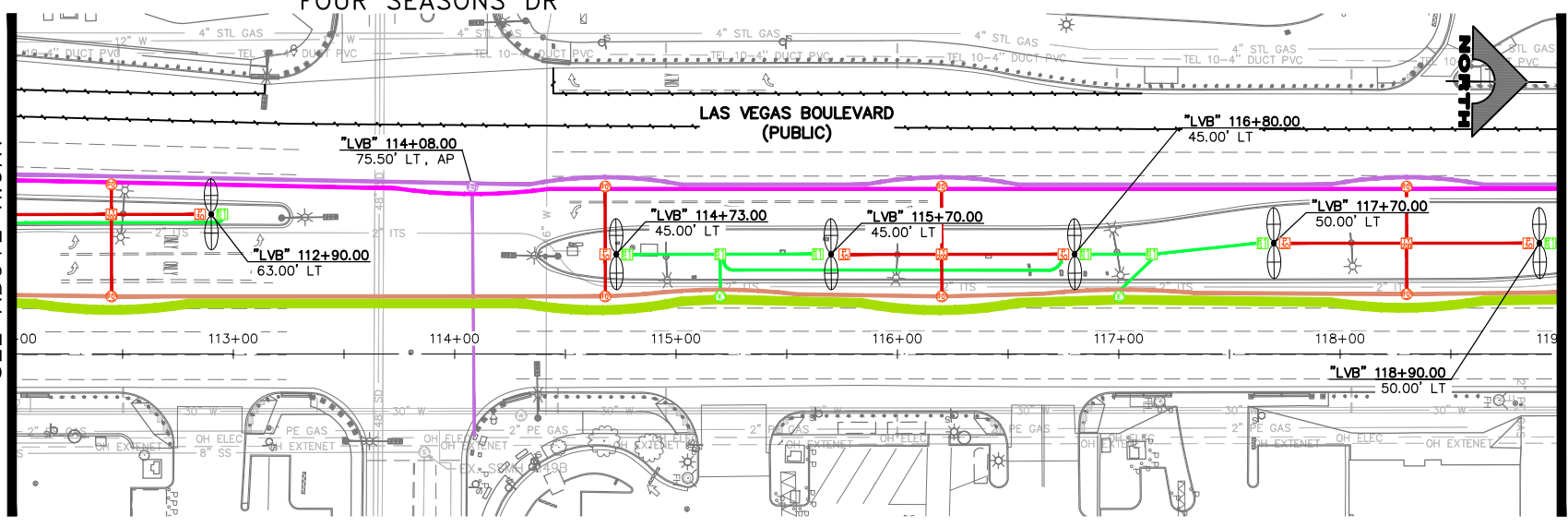
REV. NO.	DATE	DESCRIPTION	APPROVED

MATCHLINE 105+00.00  
SEE DRAWING ST-1



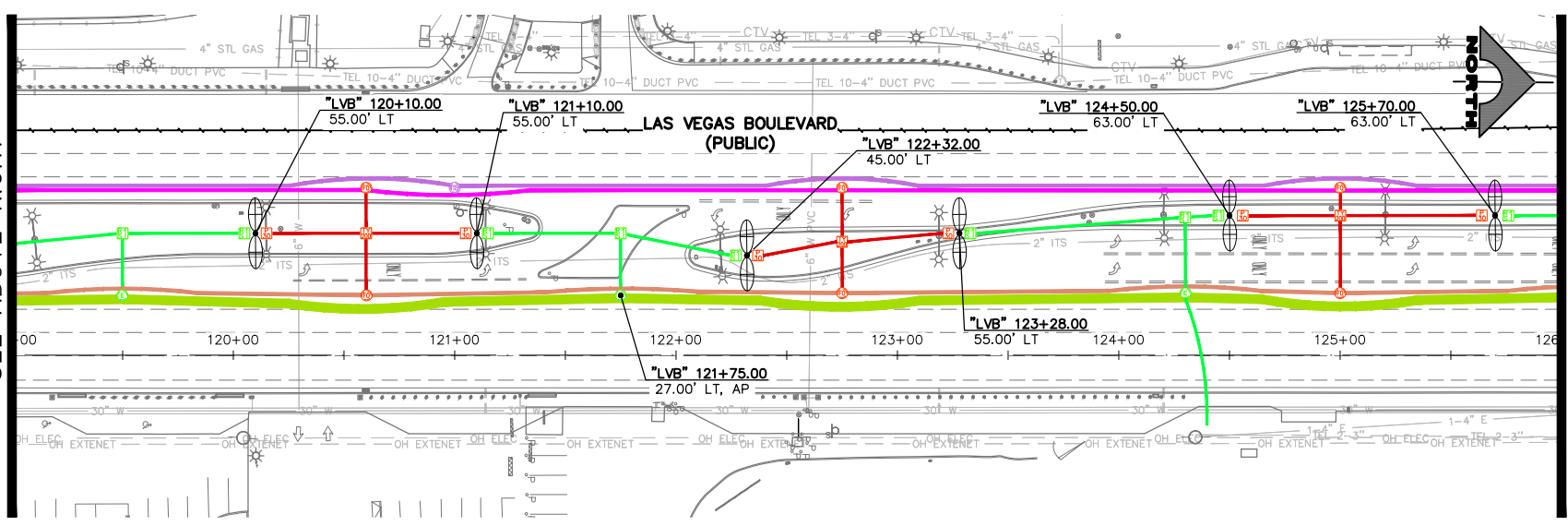
MATCHLINE 112+00.00  
SEE BELOW LEFT

MATCHLINE 112+00.00  
SEE ABOVE RIGHT

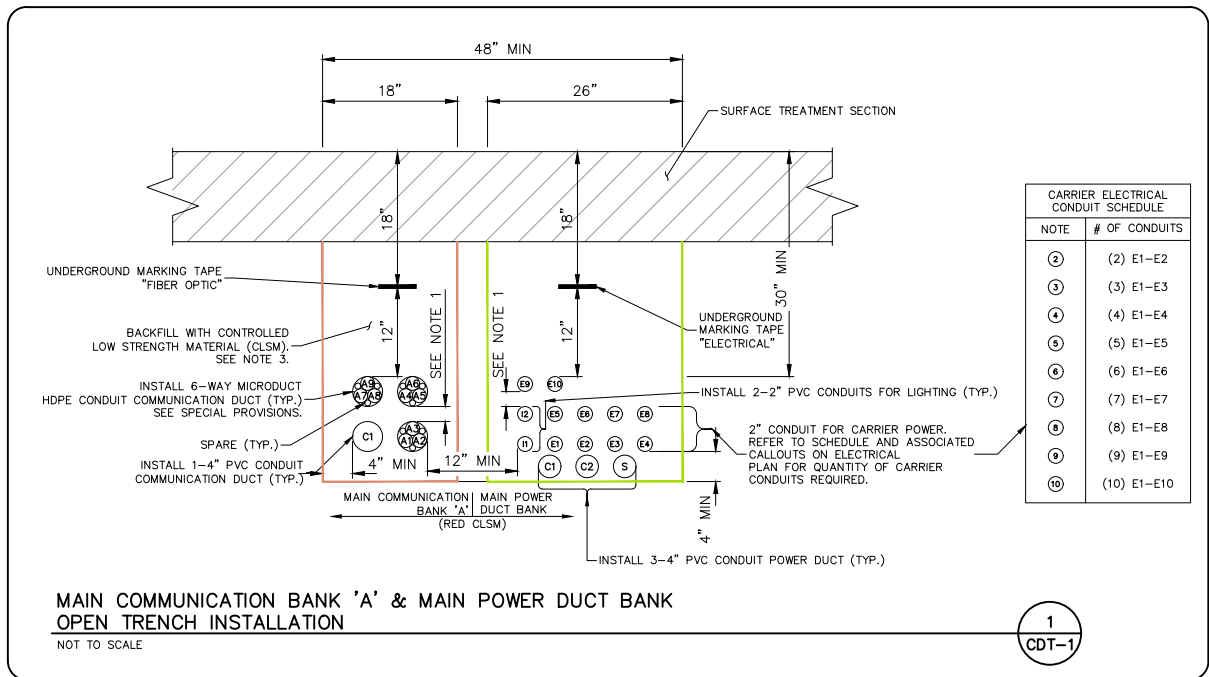


MATCHLINE 119+00.00  
SEE BELOW LEFT

MATCHLINE 119+00.00  
SEE ABOVE RIGHT



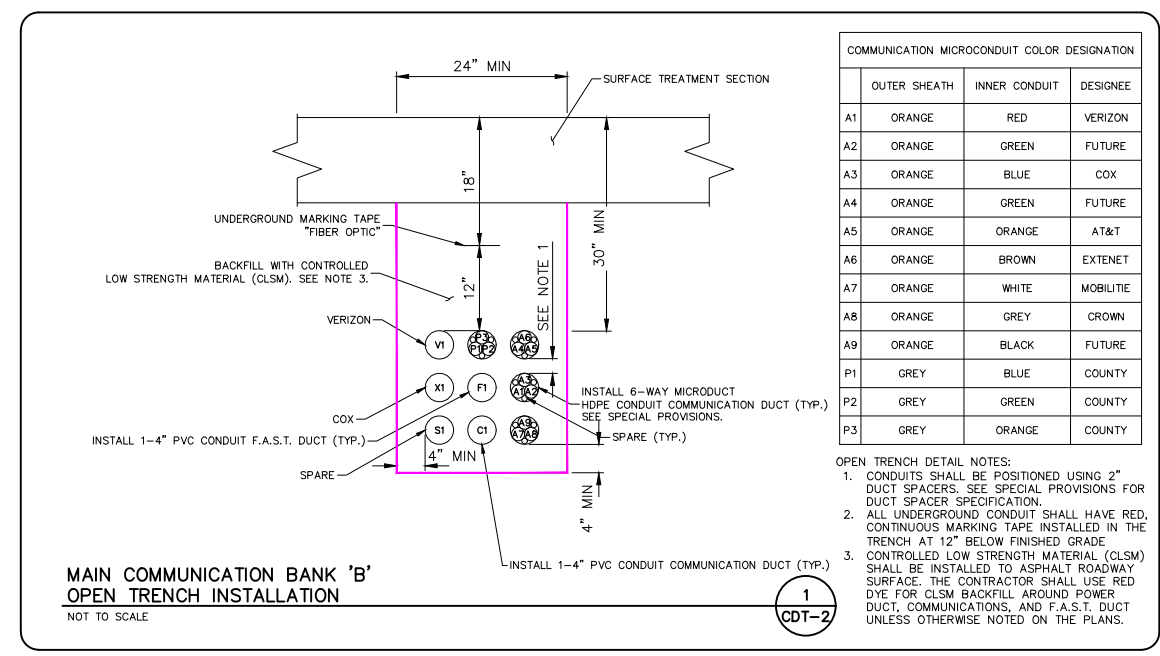
MATCHLINE 126+00.00  
SEE DRAWING ST-3



MAIN COMMUNICATION BANK 'A' & MAIN POWER DUCT BANK  
OPEN TRENCH INSTALLATION  
NOT TO SCALE

CARRIER ELECTRICAL CONDUIT SCHEDULE	
NOTE	# OF CONDUITS
②	(2) E1-E2
③	(3) E1-E3
④	(4) E1-E4
⑤	(5) E1-E5
⑥	(6) E1-E6
⑦	(7) E1-E7
⑧	(8) E1-E8
⑨	(9) E1-E9
⑩	(10) E1-E10

1  
CDT-1



MAIN COMMUNICATION BANK 'B'  
OPEN TRENCH INSTALLATION  
NOT TO SCALE

COMMUNICATION MICROCONDUIT COLOR DESIGNATION			
OUTER SHEATH	INNER CONDUIT	DESIGNEE	
A1	ORANGE	RED	VERIZON
A2	ORANGE	GREEN	FUTURE
A3	ORANGE	BLUE	COX
A4	ORANGE	GREEN	FUTURE
A5	ORANGE	ORANGE	AT&T
A6	ORANGE	BROWN	EXTENET
A7	ORANGE	WHITE	MOBILITE
A8	ORANGE	GREY	CROWN
A9	ORANGE	BLACK	FUTURE
P1	GREY	BLUE	COUNTY
P2	GREY	GREEN	COUNTY
P3	GREY	ORANGE	COUNTY

- OPEN TRENCH DETAIL NOTES:
- CONDUITS SHALL BE POSITIONED USING 2" DUCT SPACERS. SEE SPECIAL PROVISIONS FOR DUCT SPACER SPECIFICATION.
  - ALL UNDERGROUND CONDUIT SHALL HAVE RED CONTINUOUS MARKING TAPE INSTALLED IN THE TRENCH AT 12" BELOW FINISHED GRADE.
  - CONTROLLED LOW STRENGTH MATERIAL (CLSM) SHALL BE INSTALLED TO ASPHALT ROADWAY SURFACE. THE CONTRACTOR SHALL USE RED DYE FOR CLSM BACKFILL AROUND POWER DUCT, COMMUNICATIONS, AND F.A.S.T. DUCT UNLESS OTHERWISE NOTED ON THE PLANS.

1  
CDT-2

LEGEND

- COMMUNICATION DUCT BANK 'A'
- COMMUNICATIONS/POWER DUCT BANK
- FAST DUCT BANK
- COMMUNICATION DUCT BANK 'B'
- POWER LATERAL
- COMMUNICATIONS LATERAL

J:\Projects\500\500-897-LV\DWG\Exhibits\Communication Display Welcome Sign to Spring Mt\CommDisplayWelcomeSignToSpringMt.dwg  
 04-03-23 12:39:09  
 J:\Users\500\500-897-LV\DWG\Exhibits\Communication Display Welcome Sign to Spring Mt\CommDisplayWelcomeSignToSpringMt.dwg

REV. NO.	DATE	DESCRIPTION	APPROVED

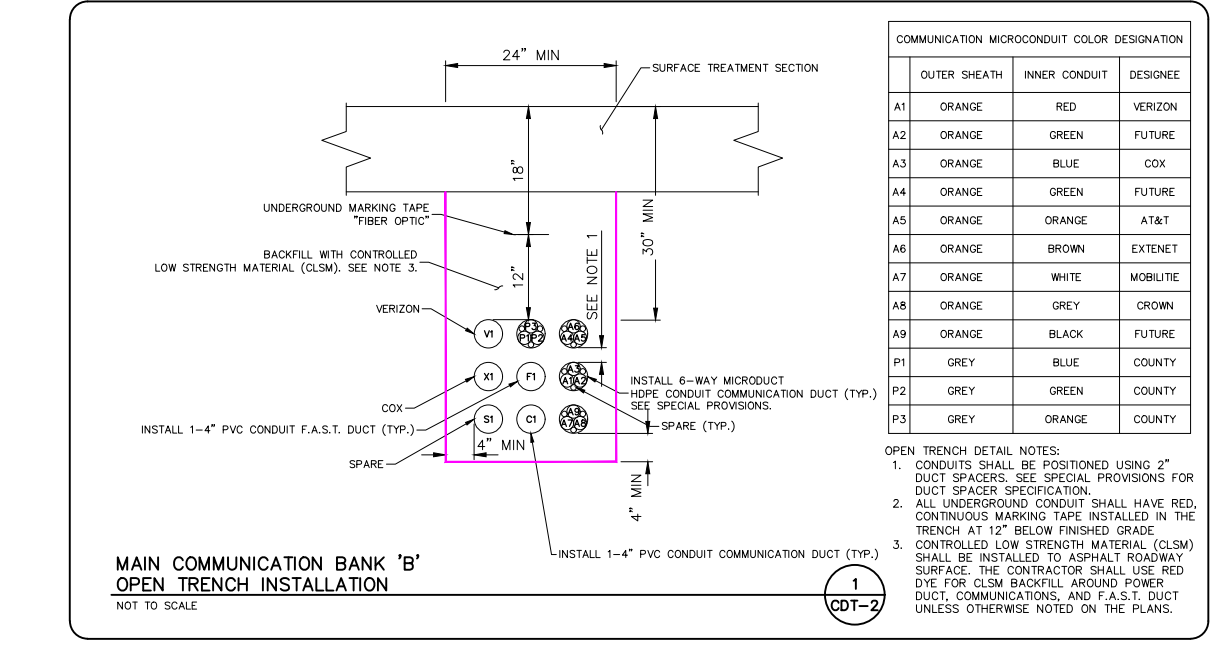
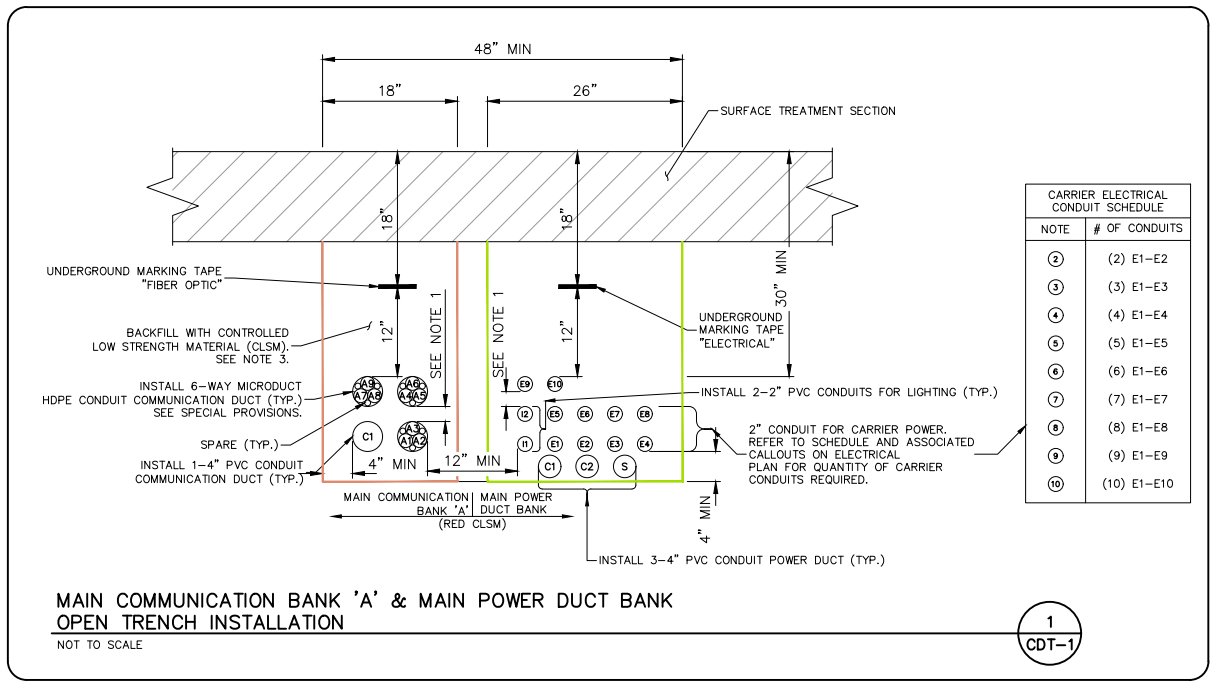
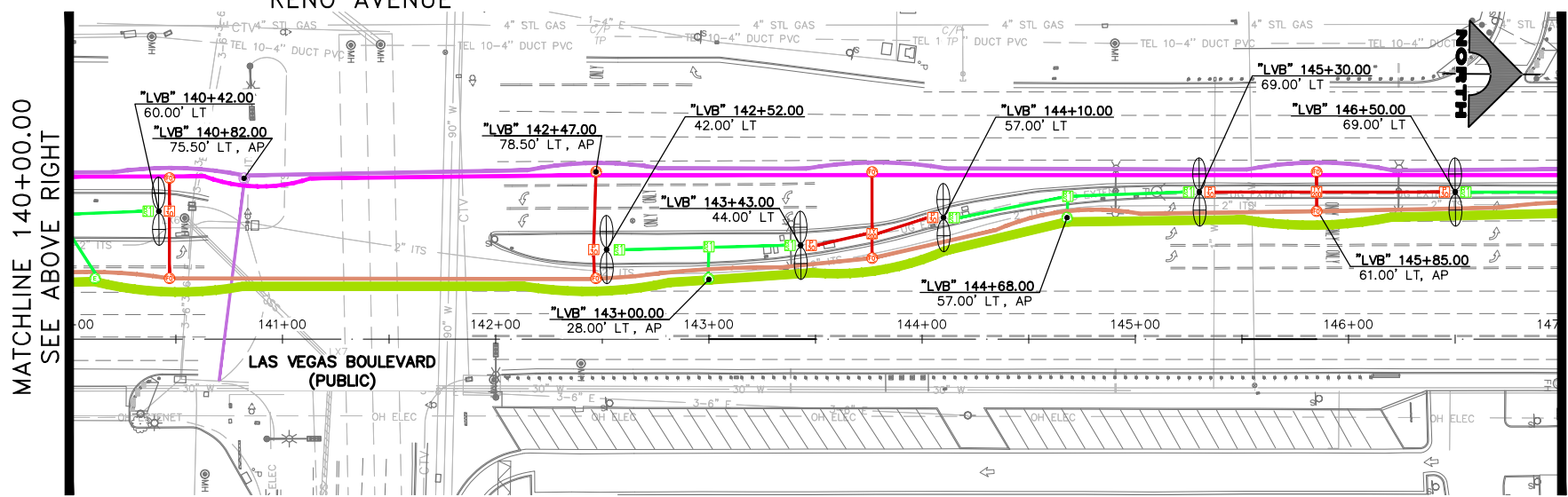
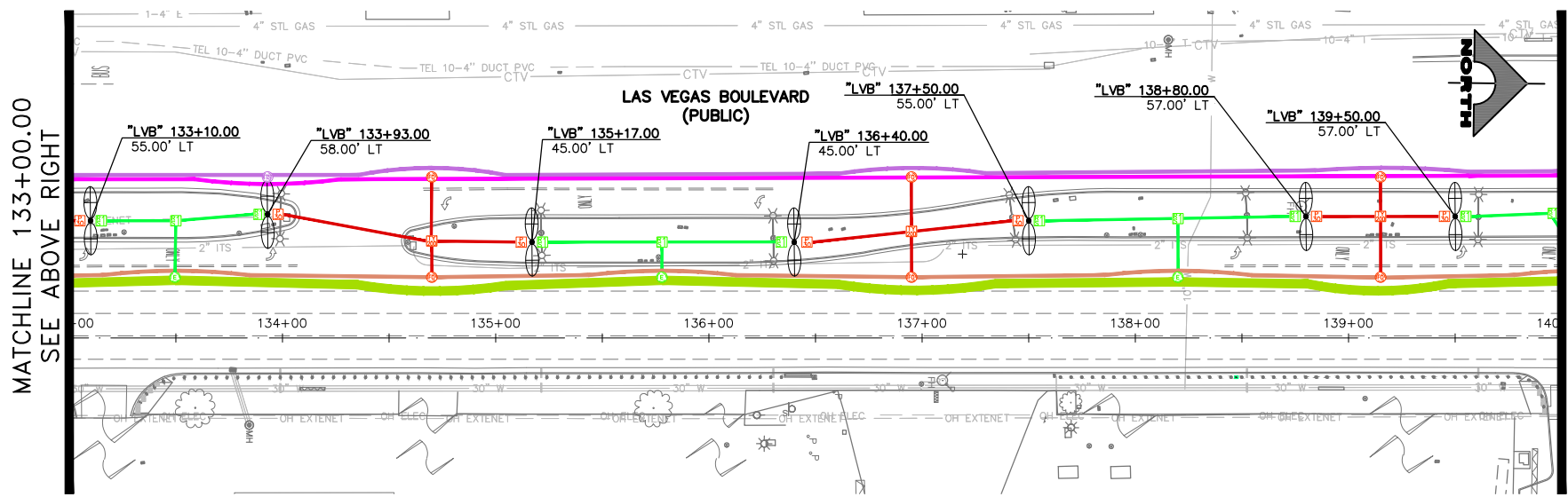
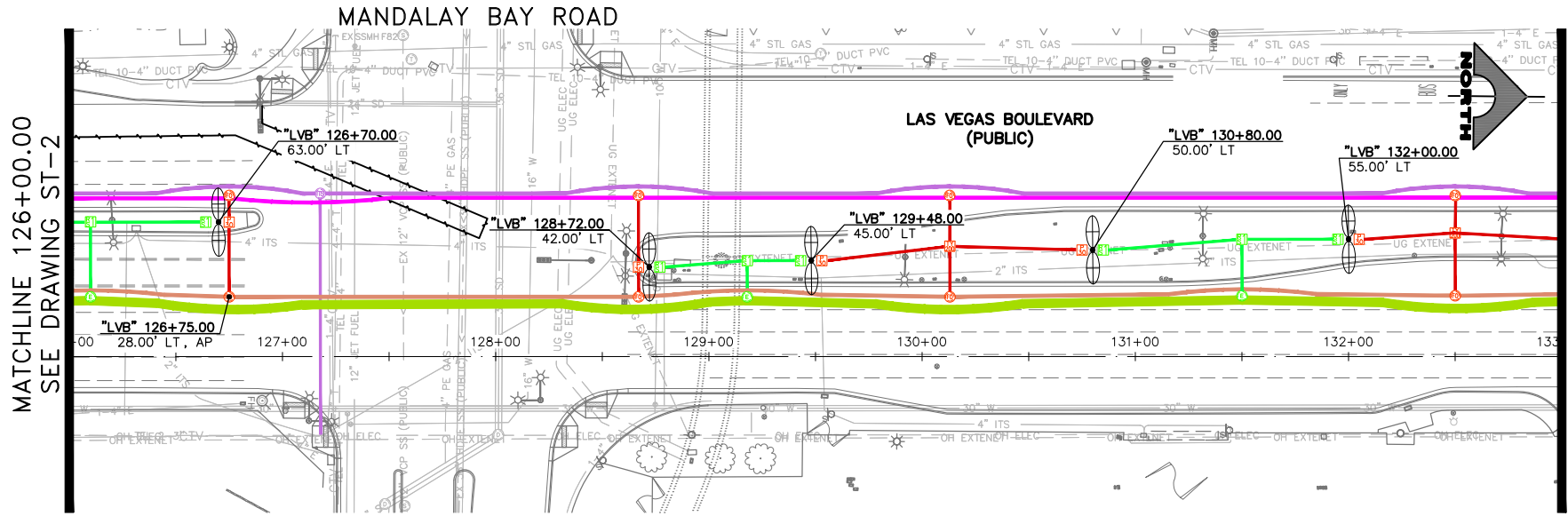


**LAS VEGAS BOULEVARD**  
**COMMUNICATION/POWER ALIGNMENT**  
**"LVB" 105+00 TO "LVB" 126+00**  
 CLARK COUNTY, NEVADA, DEPARTMENT OF PUBLIC WORKS

PROJECT No: 500-897-LV  
 DESIGNED BY: JAY  
 APPROVED BY: \_\_\_\_\_  
 DRAWN BY: JAY  
 CHECKED BY: TAM  
 SCALE: \_\_\_\_\_  
 HORIZ: 1" = 40'  
 VERT: NONE  
 FIELD BOOK: \_\_\_\_\_  
**GCV**  
 ENGINEERS & SURVEYORS  
 1555 S. RAINBOW BLVD.  
 LAS VEGAS, NV 89146  
 T: 702.804.2000  
 F: 702.804.2299  
 gcvengineering.com

DRAWING NO.  
**ST-2**  
 SHT. 2 OF 9  
 L-XXXX

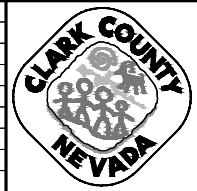




- LEGEND**
- COMMUNICATION DUCT BANK 'A'
  - COMMUNICATIONS/POWER DUCT BANK
  - FAST DUCT BANK
  - COMMUNICATION DUCT BANK 'B'
  - POWER LATERAL
  - COMMUNICATIONS LATERAL

04-03-23 12:39:23 J:\Projects\500-897-LV\DWG\Exhibits\Communication Display Welcome Sign to Spring Mt\CommDisplayWelcomeSignToSpringMt.dwg

REV. NO.	DATE	DESCRIPTION	APPROVED



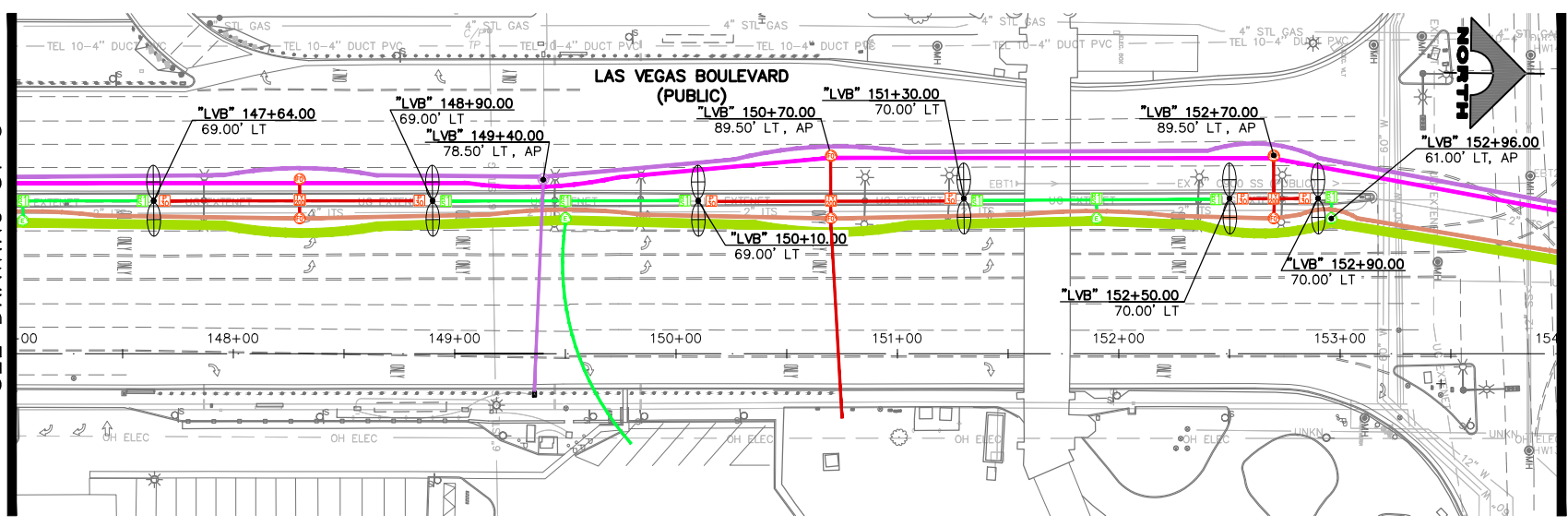
**LAS VEGAS BOULEVARD**  
 COMMUNICATION/POWER ALIGNMENT  
 "LVB" 126+00 TO "LVB" 147+00  
 CLARK COUNTY, NEVADA, DEPARTMENT OF PUBLIC WORKS

PROJECT No: 500-897-LV DRAWN BY: JAY  
 DESIGNED BY: JAY CHECKED BY: TAM  
 APPROVED BY: \_\_\_\_\_



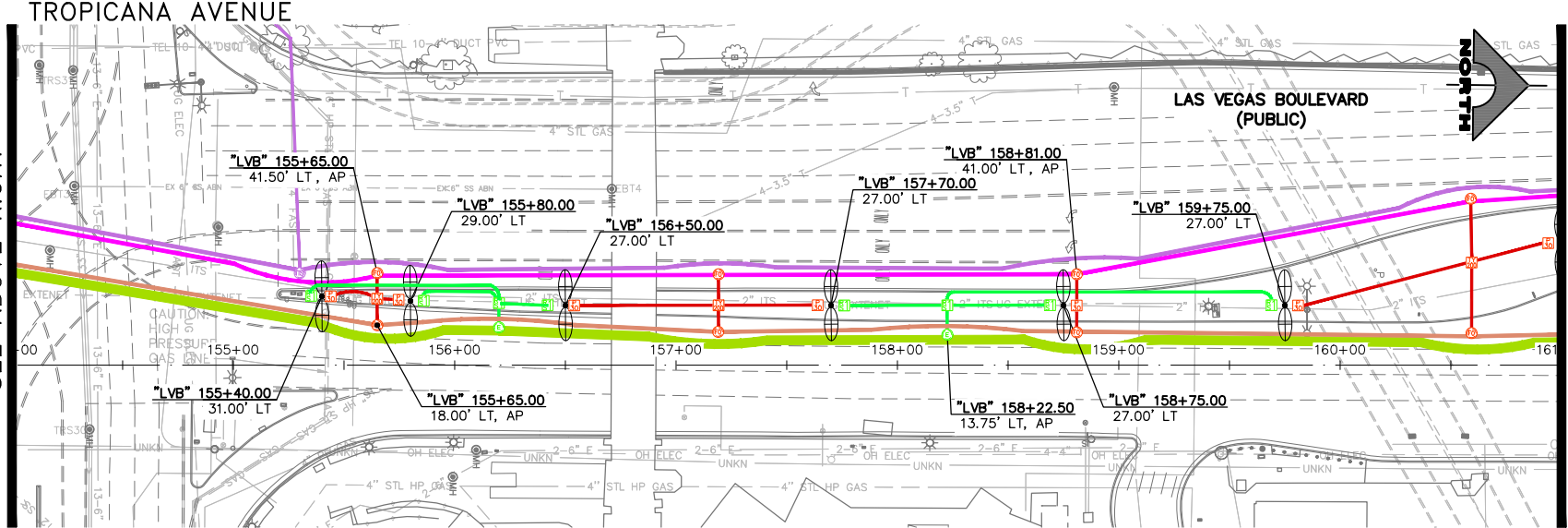
SCALE	DRAWING NO.
HORIZ: 1" = 40'	ST-3
VERT: NONE	SHT. 3 OF 9
FIELD BOOK	L-XXXX

MATCHLINE 147+00.00  
SEE DRAWING ST-3



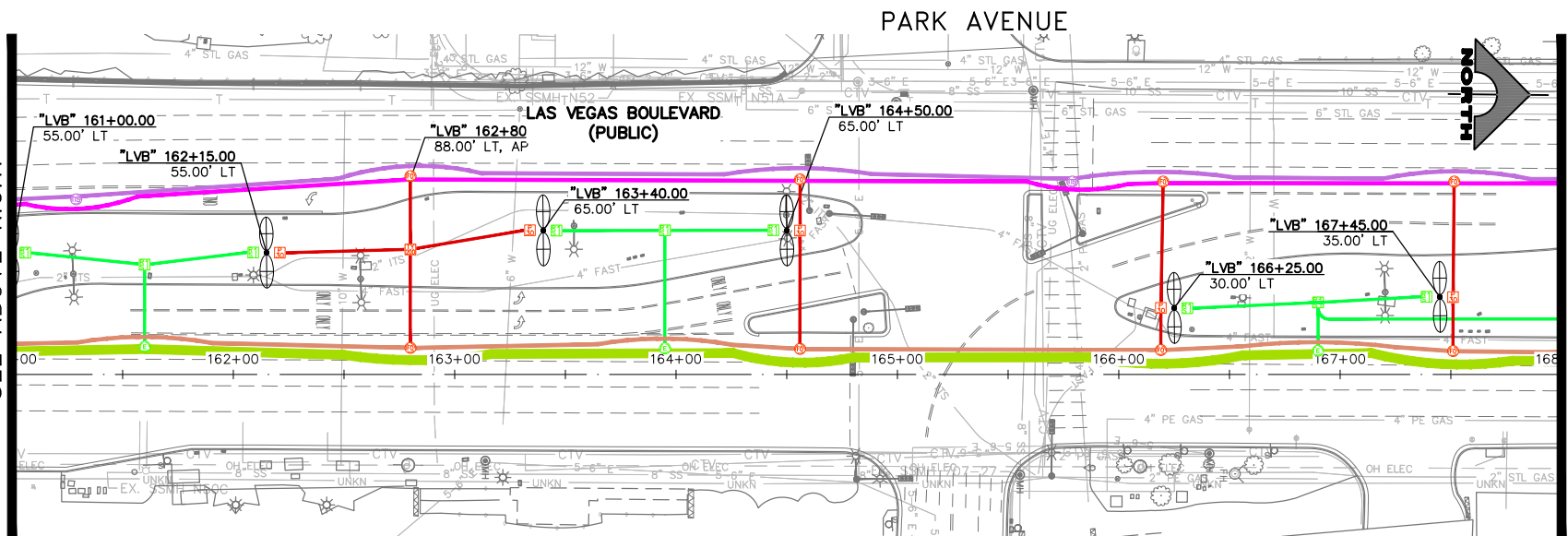
MATCHLINE 154+00.00  
SEE BELOW LEFT

MATCHLINE 154+00.00  
SEE ABOVE RIGHT

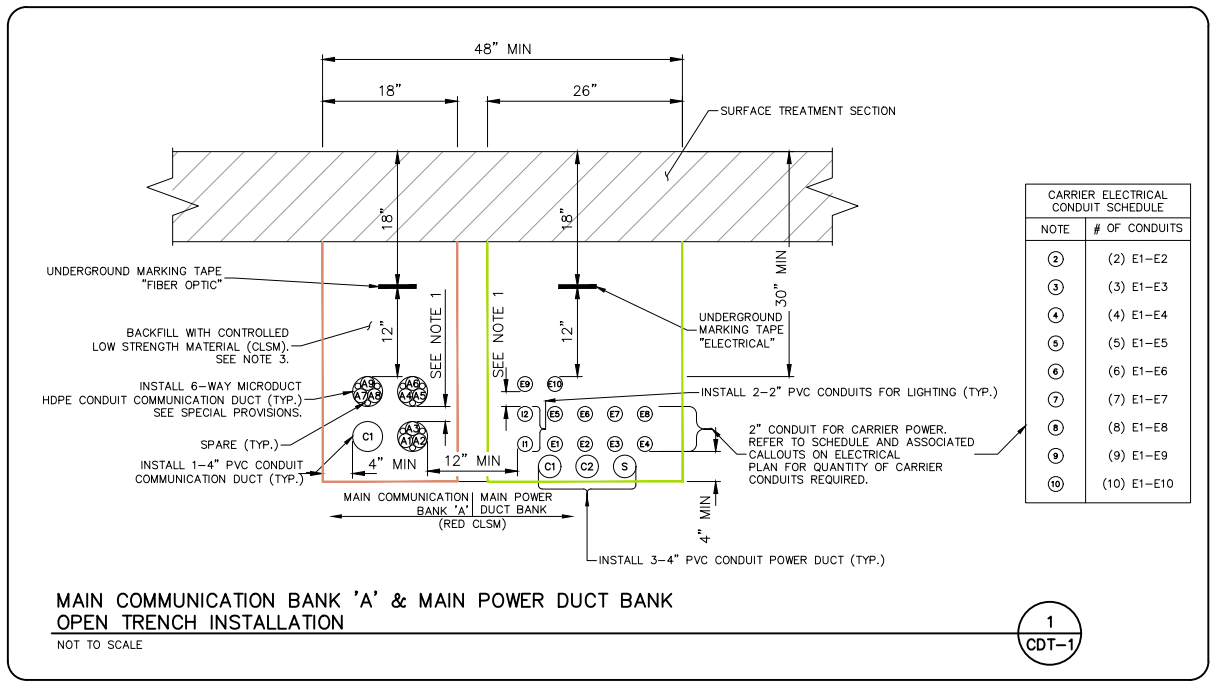


MATCHLINE 161+00.00  
SEE BELOW LEFT

MATCHLINE 161+00.00  
SEE ABOVE RIGHT

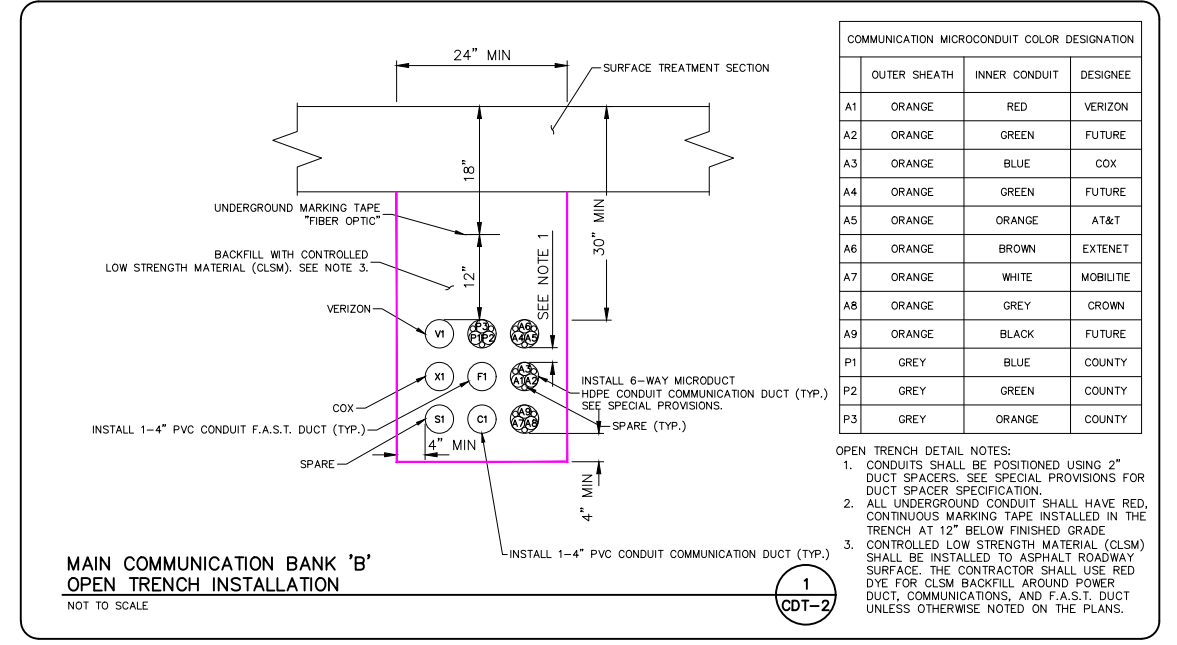


MATCHLINE 168+00.00  
SEE DRAWING ST-5



MAIN COMMUNICATION BANK 'A' & MAIN POWER DUCT BANK  
OPEN TRENCH INSTALLATION  
NOT TO SCALE

1  
CDT-1



MAIN COMMUNICATION BANK 'B'  
OPEN TRENCH INSTALLATION  
NOT TO SCALE

1  
CDT-2

LEGEND

- COMMUNICATION DUCT BANK 'A'
- COMMUNICATIONS/POWER DUCT BANK
- FAST DUCT BANK
- COMMUNICATION DUCT BANK 'B'
- POWER LATERAL
- COMMUNICATIONS LATERAL

J:\Projects\500\500-897-LV\DWG\Exhibits\Communication Display Welcome Sign to Spring Mt\CommDisplayWelcomeSignToSpringMt.dwg  
 04-03-23 12:39:38

REV. NO.	DATE	DESCRIPTION	APPROVED

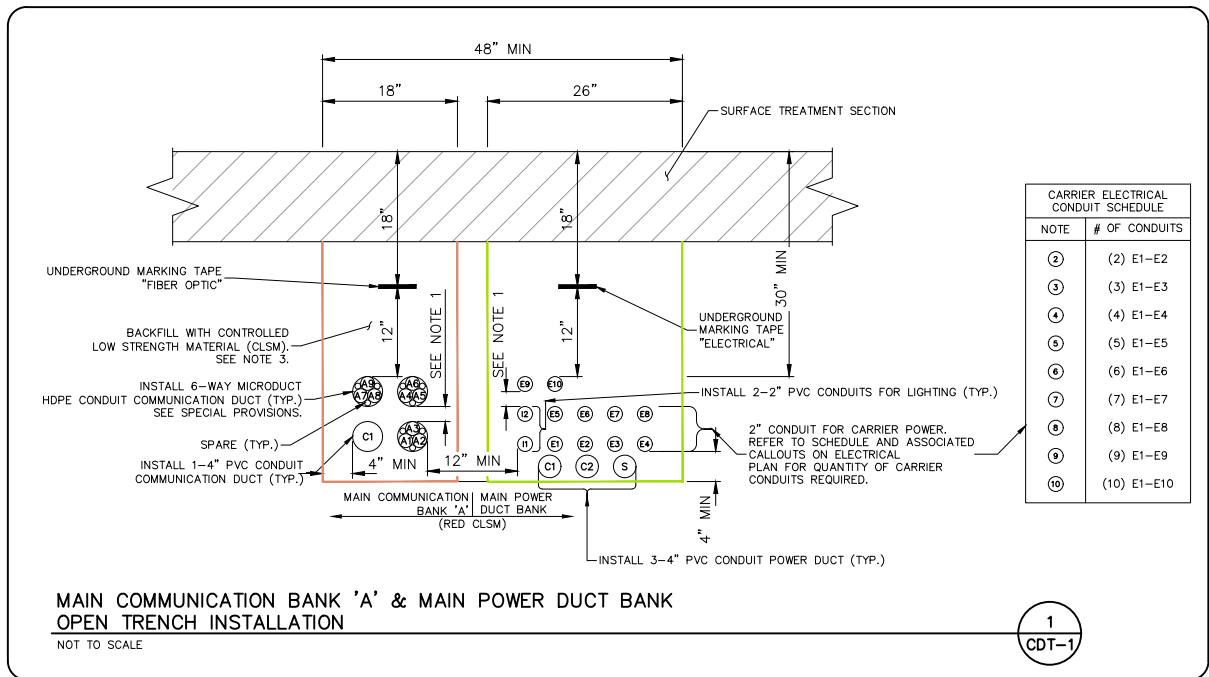
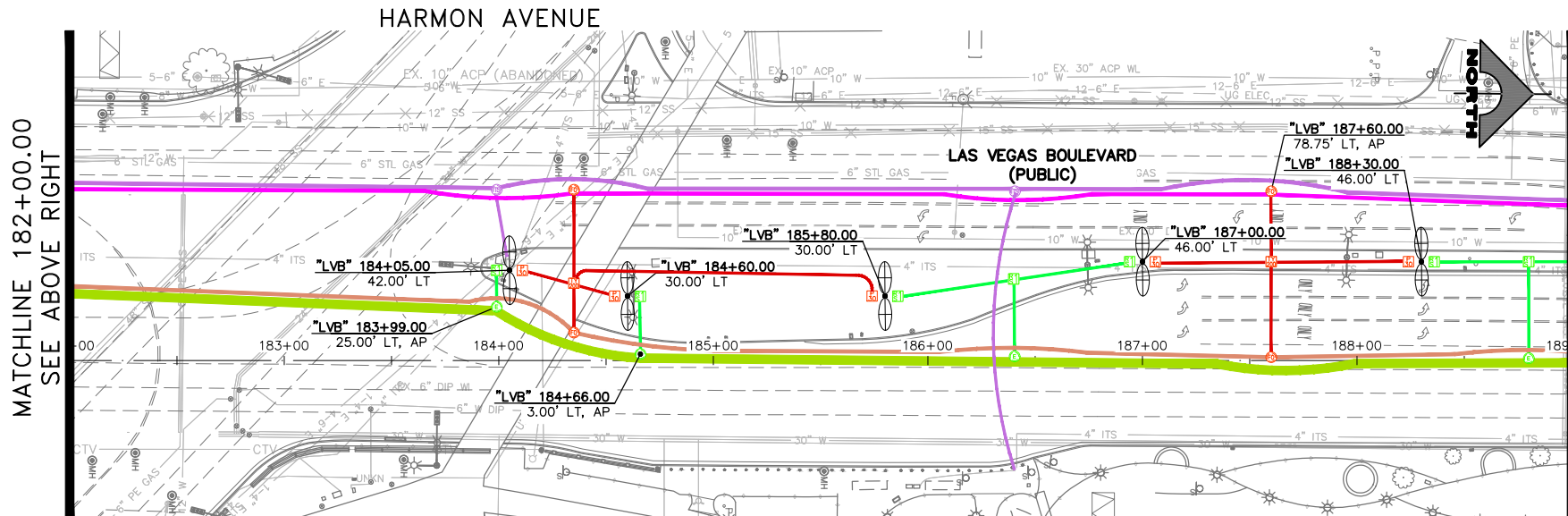
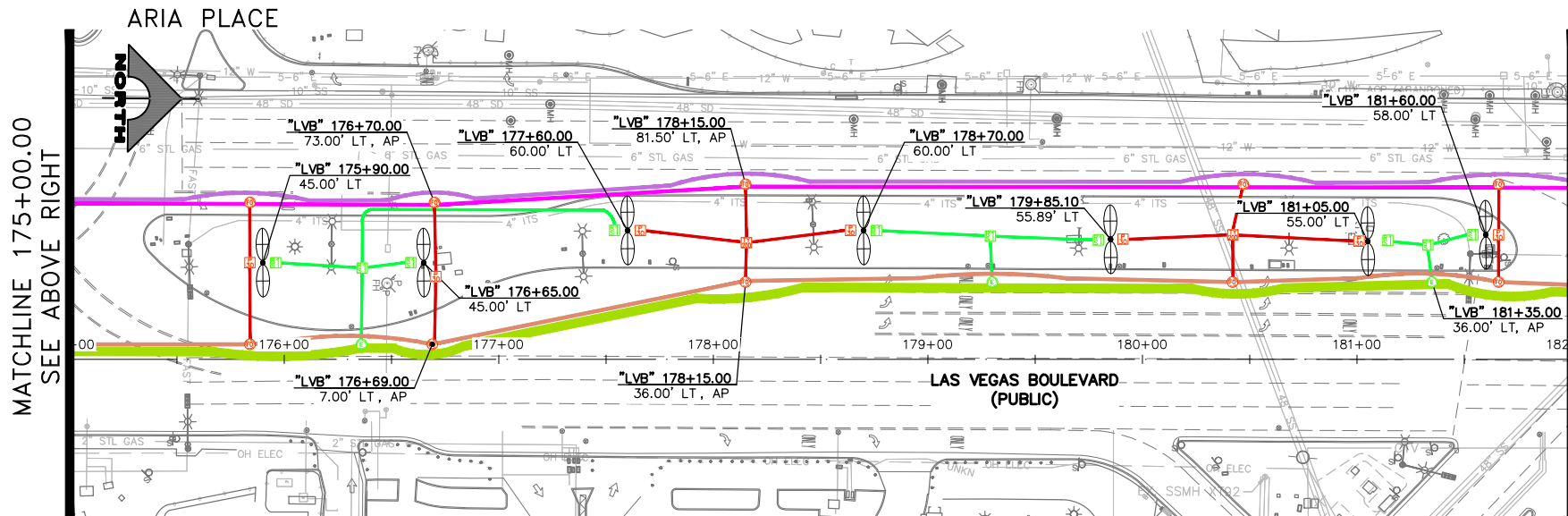
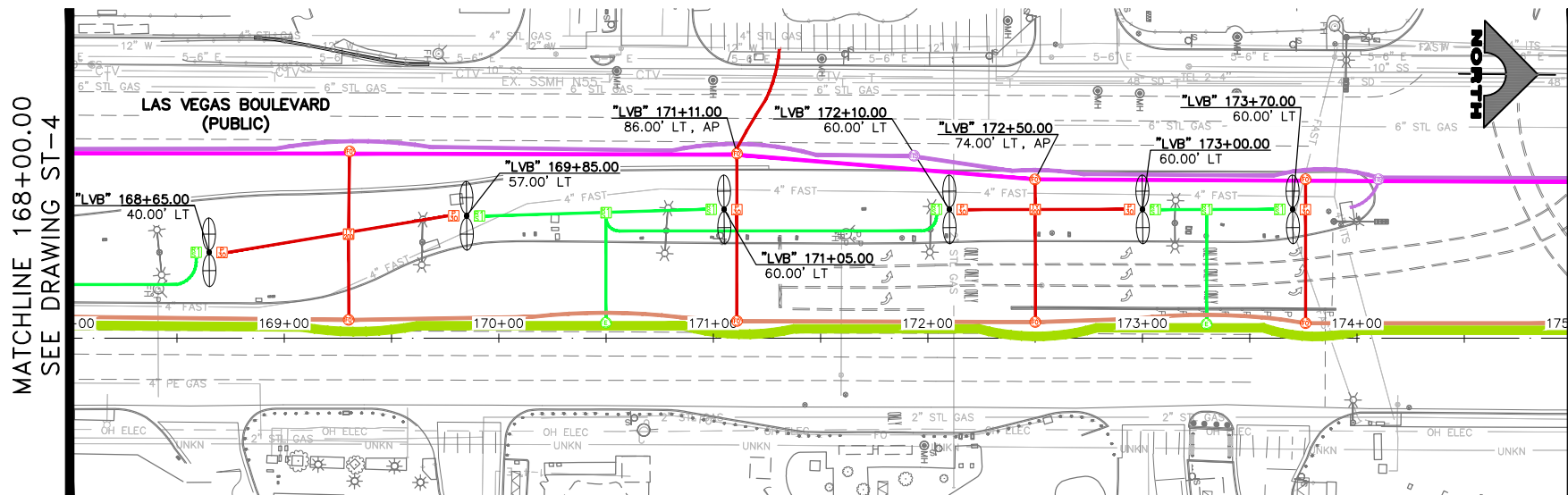


**LAS VEGAS BOULEVARD**  
 COMMUNICATION/POWER ALIGNMENT  
 "LVB" 147+00 TO "LVB" 168+00  
 CLARK COUNTY, NEVADA, DEPARTMENT OF PUBLIC WORKS

PROJECT No: 500-897-LV DRAWN BY: JAY  
 DESIGNED BY: JAY CHECKED BY: TAM  
 APPROVED BY: \_\_\_\_\_  
**GCV** ENGINEERS SURVEYORS  
 1555 S. RAINBOW BLVD.  
 LAS VEGAS, NV 89146  
 T: 702.804.2000  
 F: 702.804.2299  
 gcvengineering.com

SCALE	DRAWING NO.
HORIZ: 1" = 40'	ST-4
VERT: NONE	
FIELD BOOK	SHT. 4 OF 9
	L-XXXX

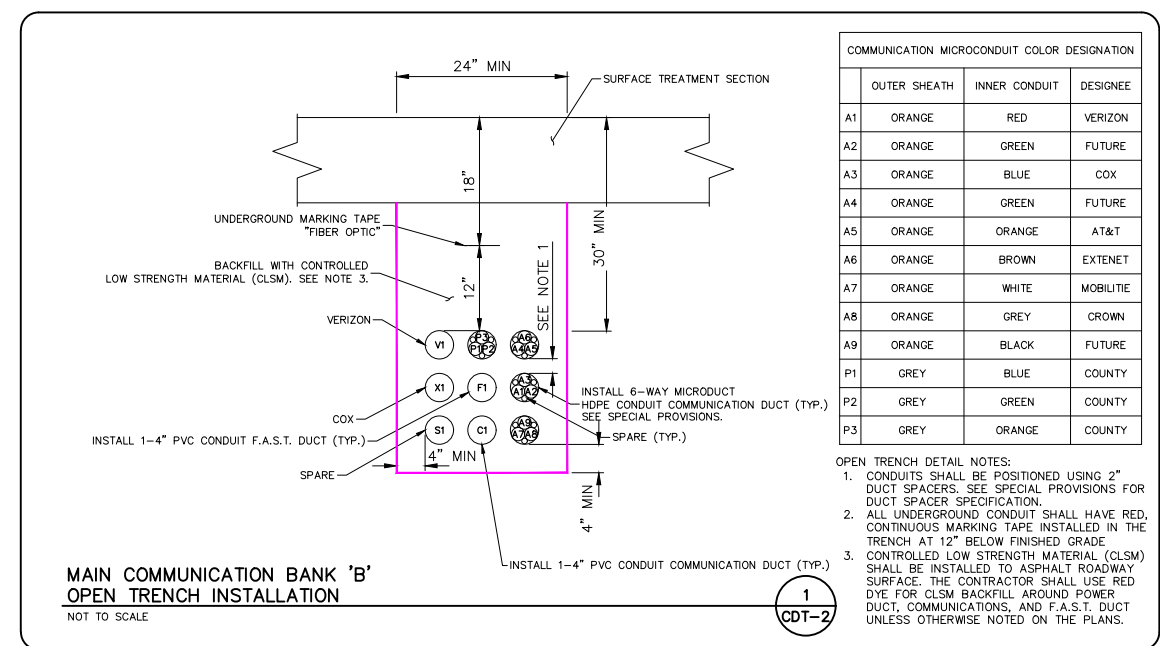




NOTE	# OF CONDUITS
②	(2) E1-E2
③	(3) E1-E3
④	(4) E1-E4
⑤	(5) E1-E5
⑥	(6) E1-E6
⑦	(7) E1-E7
⑧	(8) E1-E8
⑨	(9) E1-E9
⑩	(10) E1-E10

**MAIN COMMUNICATION BANK 'A' & MAIN POWER DUCT BANK  
OPEN TRENCH INSTALLATION**  
NOT TO SCALE

1  
CDT-1



OUTER SHEATH	INNER CONDUIT	DESIGNEE	
A1	ORANGE	RED	VERIZON
A2	ORANGE	GREEN	FUTURE
A3	ORANGE	BLUE	COX
A4	ORANGE	GREEN	FUTURE
A5	ORANGE	ORANGE	AT&T
A6	ORANGE	BROWN	EXTENET
A7	ORANGE	WHITE	MOBILITE
A8	ORANGE	GREY	CROWN
A9	ORANGE	BLACK	FUTURE
P1	GREY	BLUE	COUNTY
P2	GREY	GREEN	COUNTY
P3	GREY	ORANGE	COUNTY

**OPEN TRENCH DETAIL NOTES:**  
 1. CONDUITS SHALL BE POSITIONED USING 2" DUCT SPACERS. SEE SPECIAL PROVISIONS FOR DUCT SPACER SPECIFICATION.  
 2. ALL UNDERGROUND CONDUIT SHALL HAVE RED CONTINUOUS MARKING TAPE INSTALLED IN THE TRENCH AT 12" BELOW FINISHED GRADE.  
 3. CONTROLLED LOW STRENGTH MATERIAL (CLSM) SHALL BE INSTALLED TO ASPHALT ROADWAY SURFACE. THE CONTRACTOR SHALL USE RED DYE FOR CLSM BACKFILL AROUND POWER DUCT, COMMUNICATIONS, AND F.A.S.T. DUCT UNLESS OTHERWISE NOTED ON THE PLANS.

**MAIN COMMUNICATION BANK 'B'  
OPEN TRENCH INSTALLATION**  
NOT TO SCALE

1  
CDT-2



**LEGEND**

J:\Projects\500\500-897-LV\DWG\Exhibits\Communication Display Welcome Sign to Spring Mt\CommDisplayWelcomeSignToSpringMt.dwg  
 04-03-23 12:39:53  
 J:\Users\j\Documents\Projects\500\500-897-LV\DWG\Exhibits\Communication Display Welcome Sign to Spring Mt\CommDisplayWelcomeSignToSpringMt.dwg

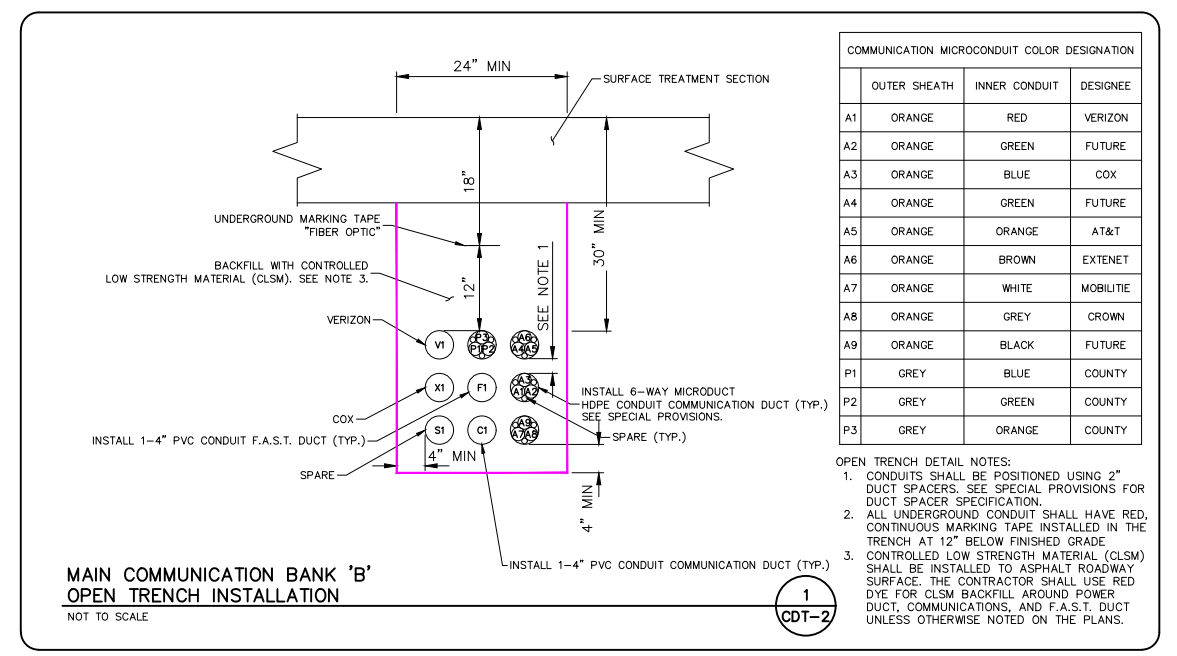
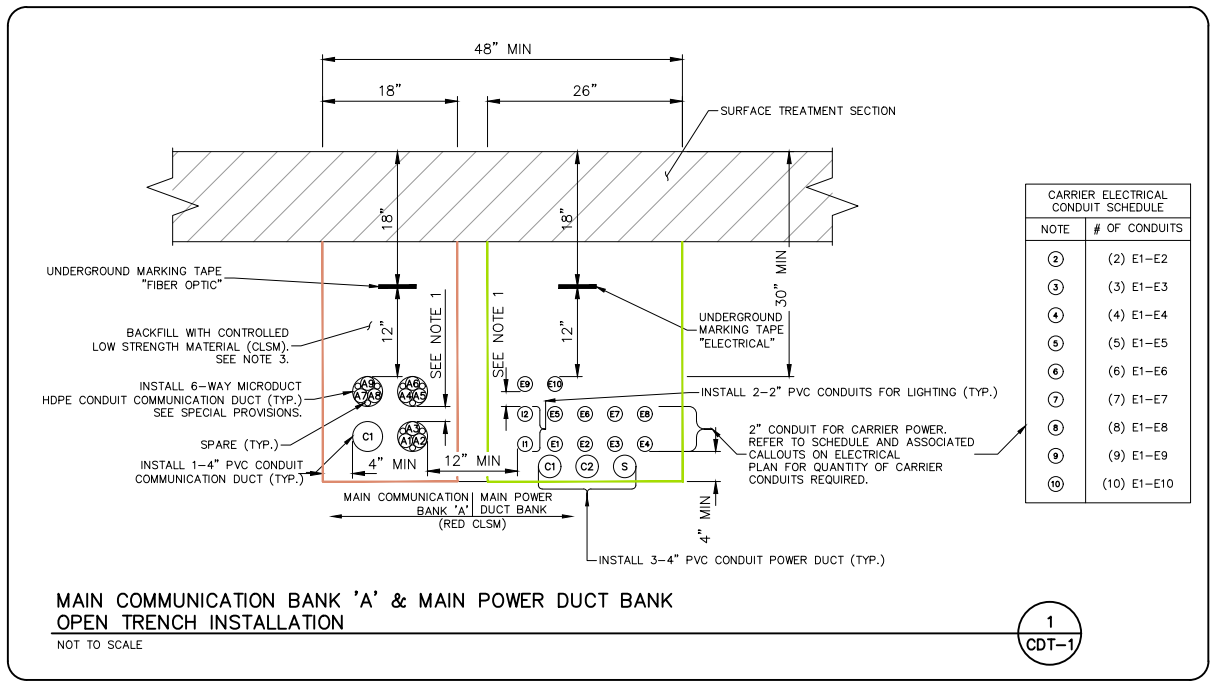
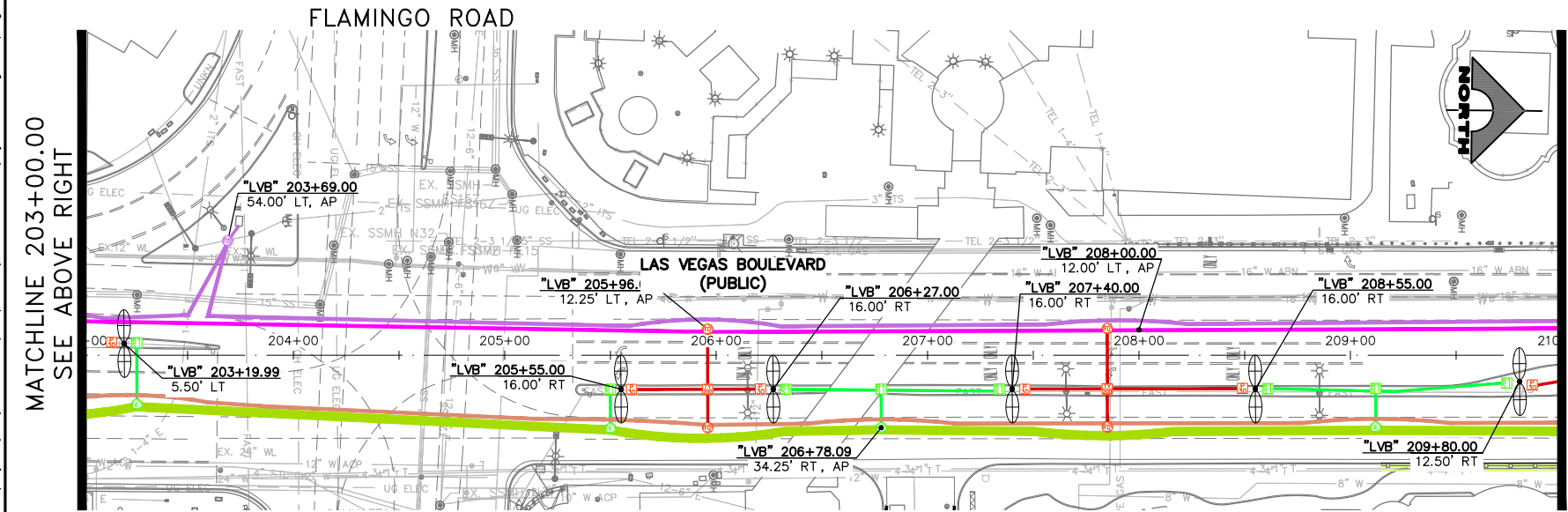
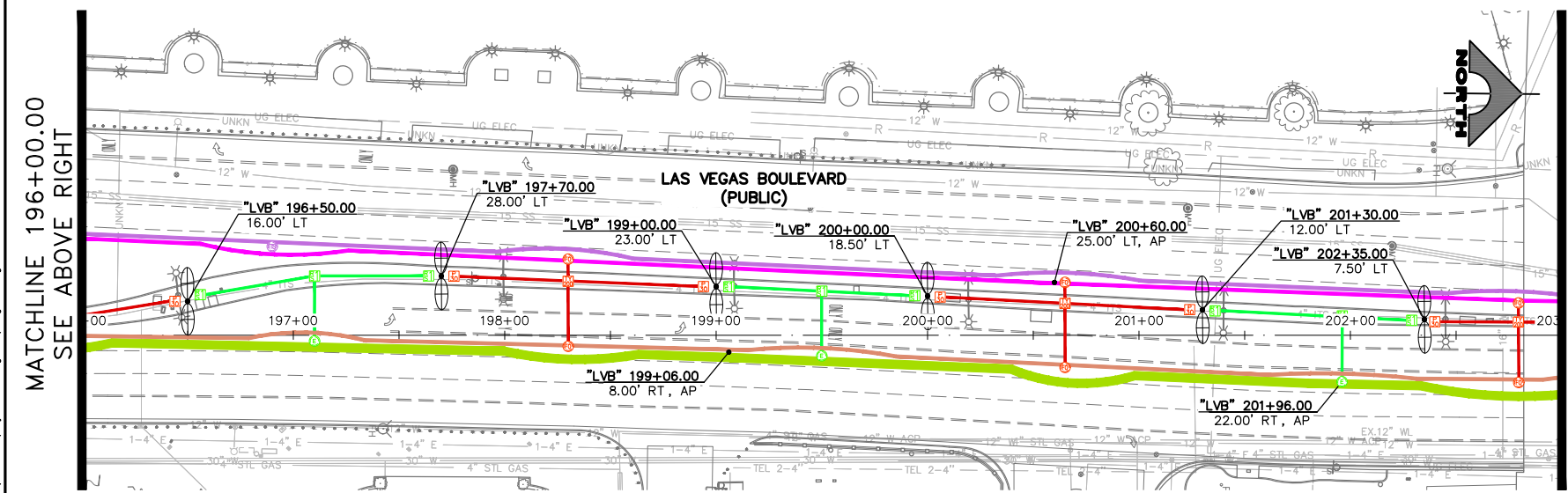
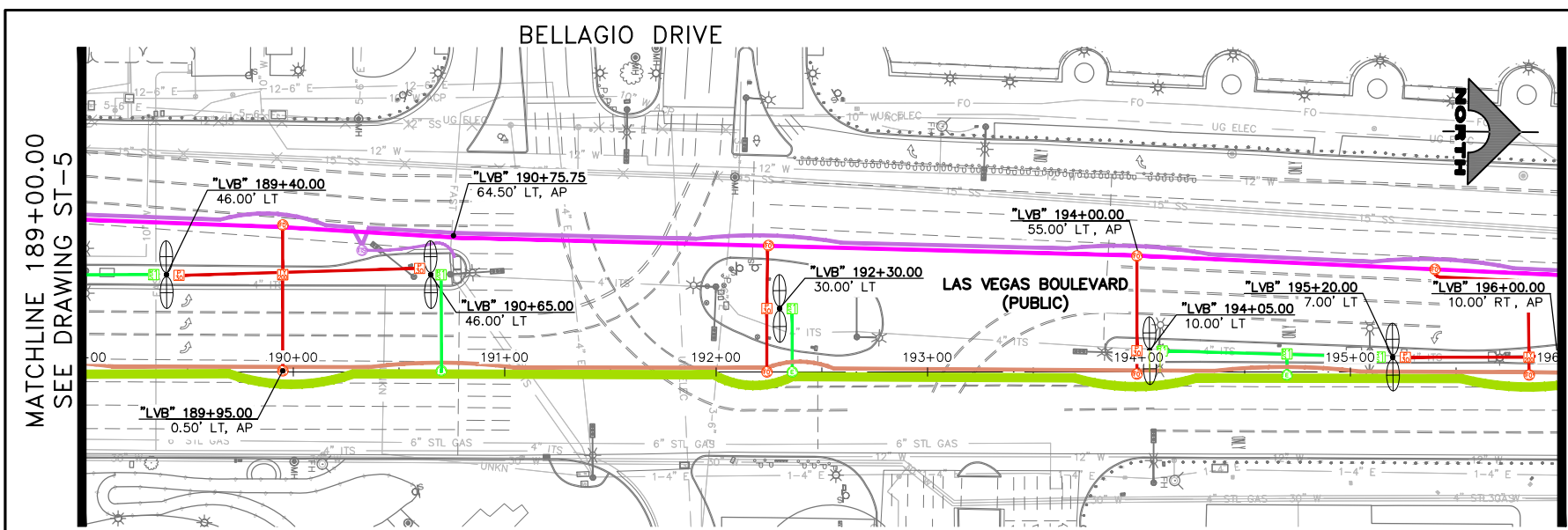
REV. NO.	DATE	DESCRIPTION	APPROVED



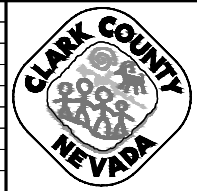
**LAS VEGAS BOULEVARD**  
**COMMUNICATION/POWER ALIGNMENT**  
**"LVB" 168+00 TO "LVB" 189+00**  
 CLARK COUNTY, NEVADA, DEPARTMENT OF PUBLIC WORKS

PROJECT No: 500-897-LV DRAWN BY: JAY  
 DESIGNED BY: JAY CHECKED BY: TAM  
 APPROVED BY: \_\_\_\_\_  
**GCV** ENGINEERS SURVEYORS  
 1555 S. RAINBOW BLVD.  
 LAS VEGAS, NV 89146  
 T: 702.804.2000  
 F: 702.804.2299  
 gcvengineering.com

SCALE	DRAWING NO.
HORIZ: 1" = 40'	<b>ST-5</b>
VERT: NONE	
FIELD BOOK	SHT. 5 OF 9
	L-XXXX



REV. NO.	DATE	DESCRIPTION	APPROVED



**LAS VEGAS BOULEVARD**  
COMMUNICATION/POWER ALIGNMENT  
"LVB" 189+00 TO "LVB" 210+00  
CLARK COUNTY, NEVADA, DEPARTMENT OF PUBLIC WORKS

PROJECT No: 500-897-LV DRAWN BY: JAY  
DESIGNED BY: JAY CHECKED BY: TAM  
APPROVED BY: \_\_\_\_\_

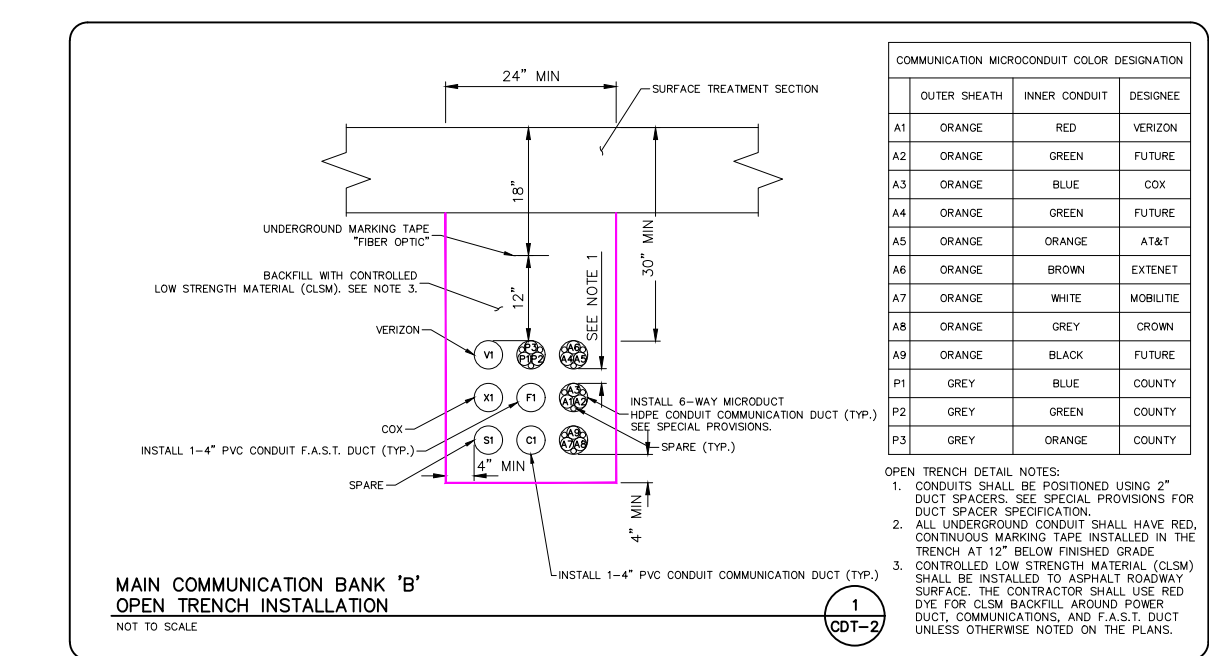
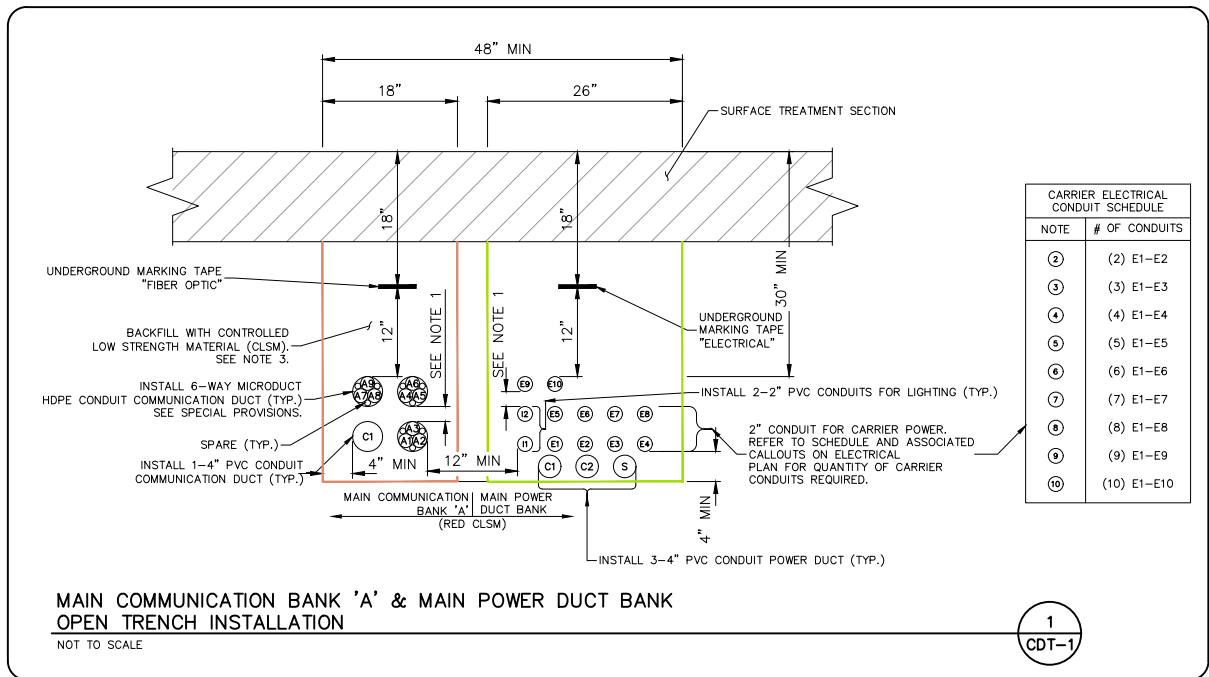
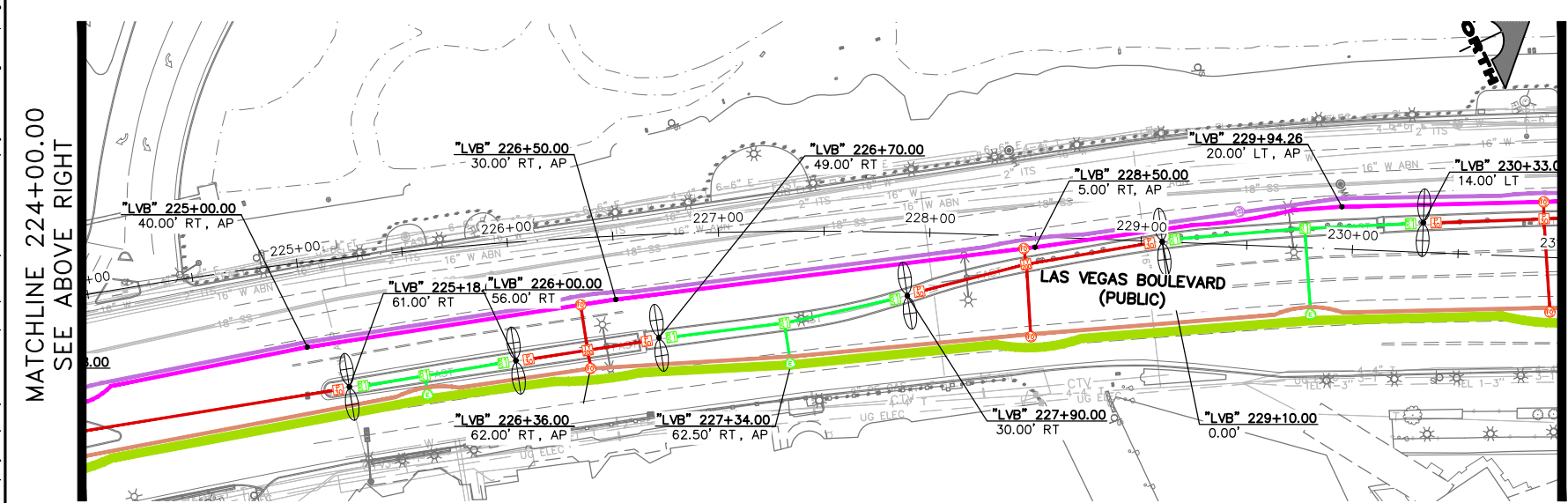
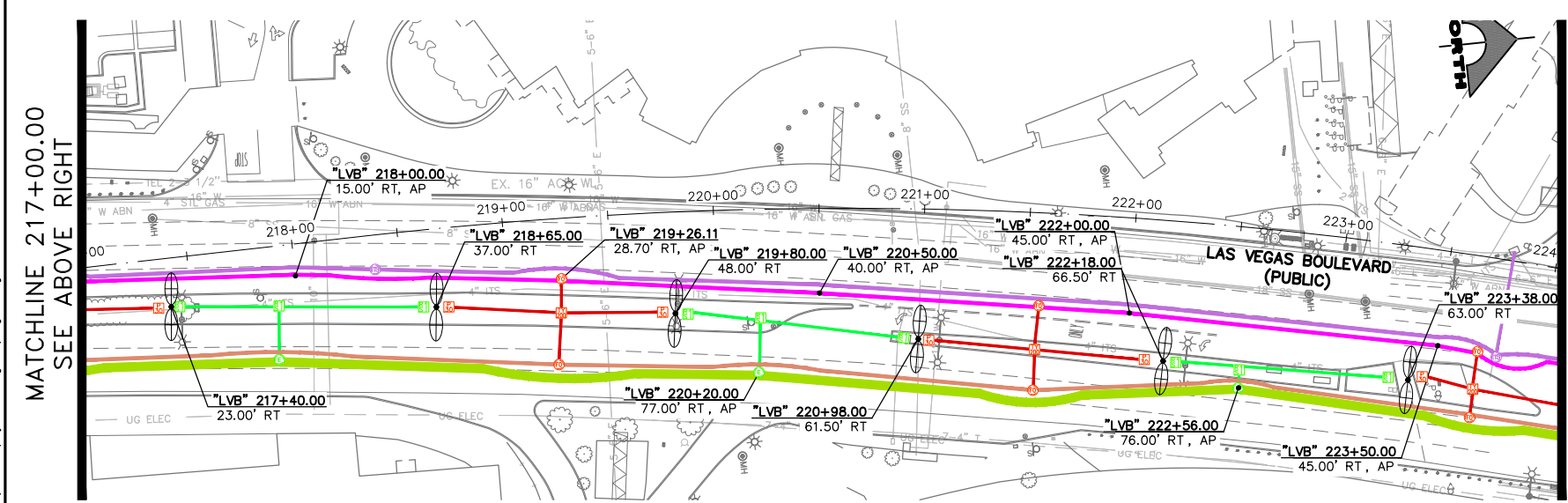
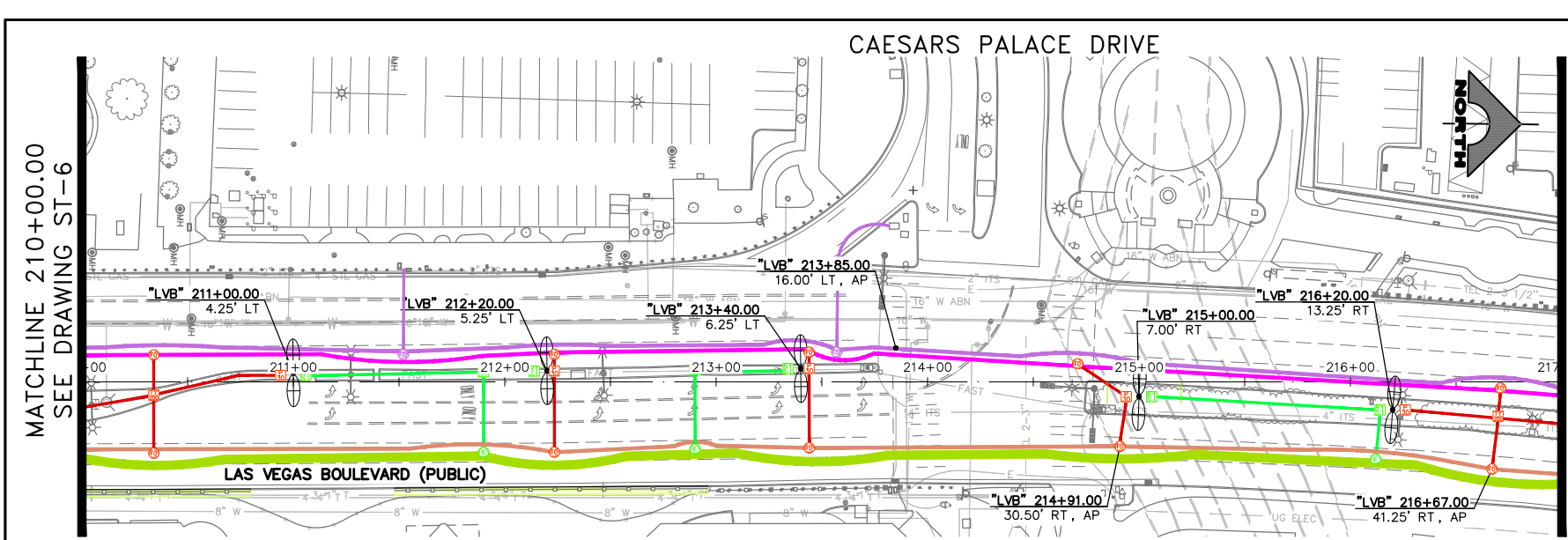
**GCV**  
ENGINEERS SURVEYORS

1555 S. RAINBOW BLVD.  
LAS VEGAS, NV 89146  
T: 702.804.2000  
F: 702.804.2299  
gcvengineering.com

SCALE	DRAWING NO.
HORIZ: 1" = 40'	ST-6
VERT: NONE	SHT. 6 OF 9
FIELD BOOK	L-XXXX

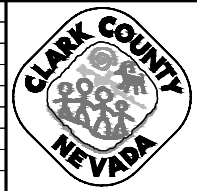
04-03-23 12:40:08 F:\Projects\500-897-LV\DWG\Exhibits\Communication Display Welcome Sign to Spring Mt\CommDisplayWelcomeSignToSpringMt.dwg  
 J:\Users\j\





- LEGEND**
- COMMUNICATION DUCT BANK 'A'
  - COMMUNICATIONS/POWER DUCT BANK
  - FAST DUCT BANK
  - COMMUNICATION DUCT BANK 'B'
  - POWER LATERAL
  - COMMUNICATIONS LATERAL

REV. NO.	DATE	DESCRIPTION	APPROVED



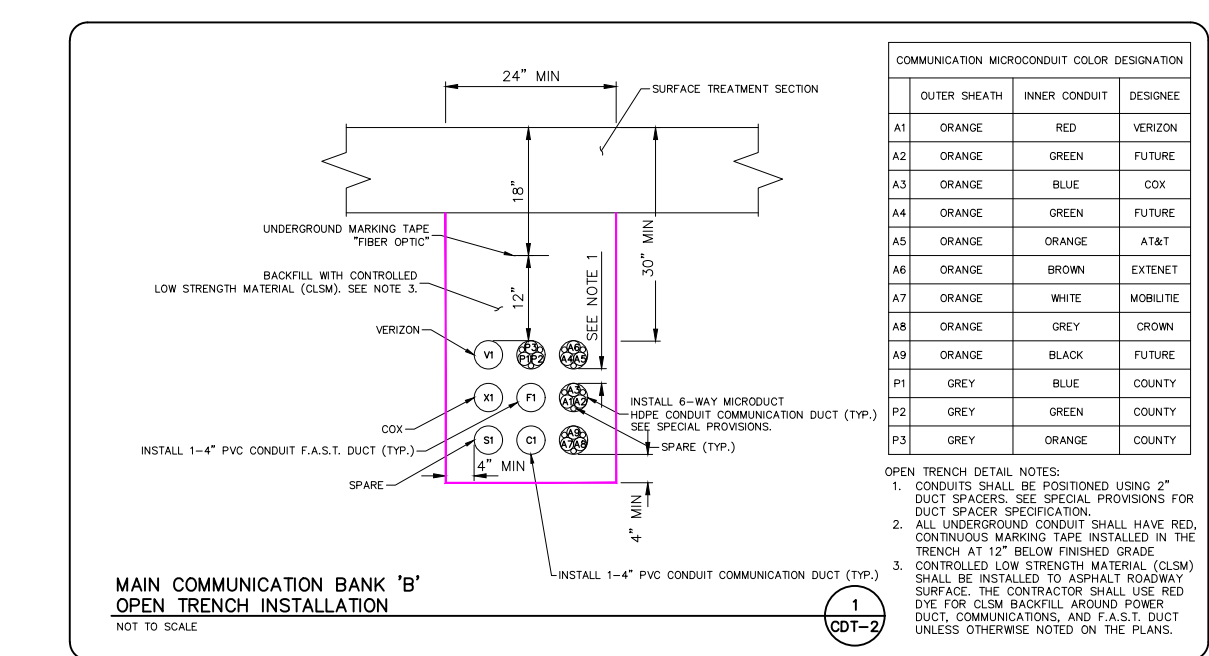
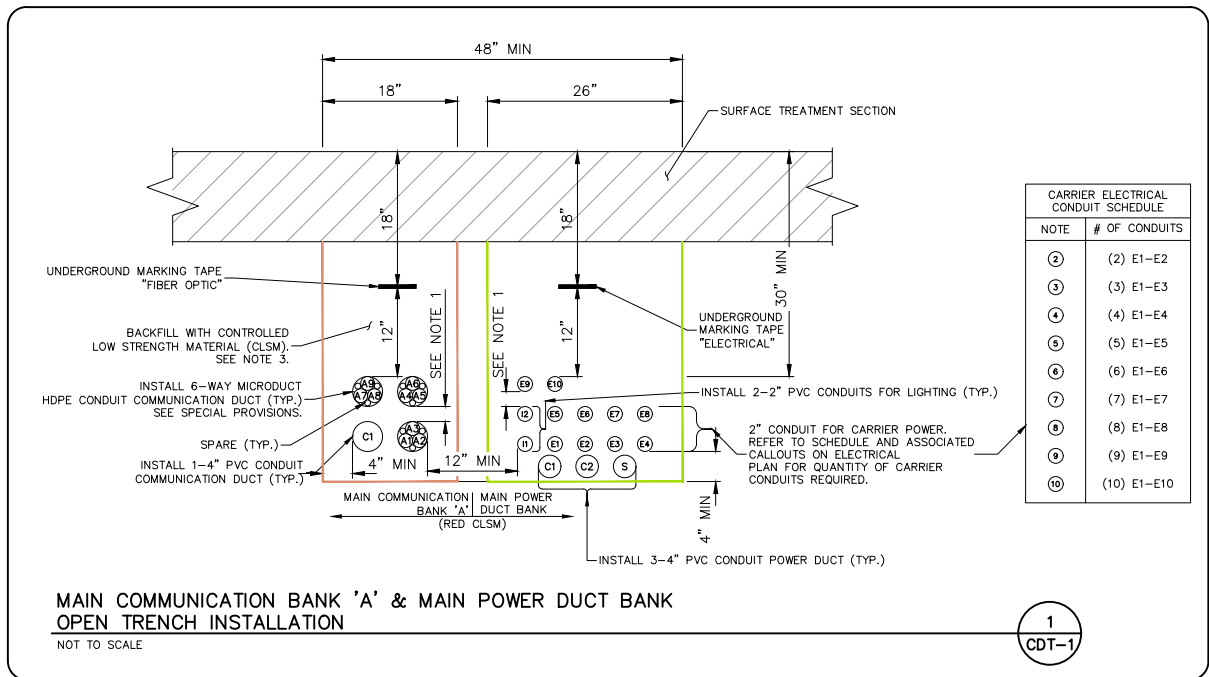
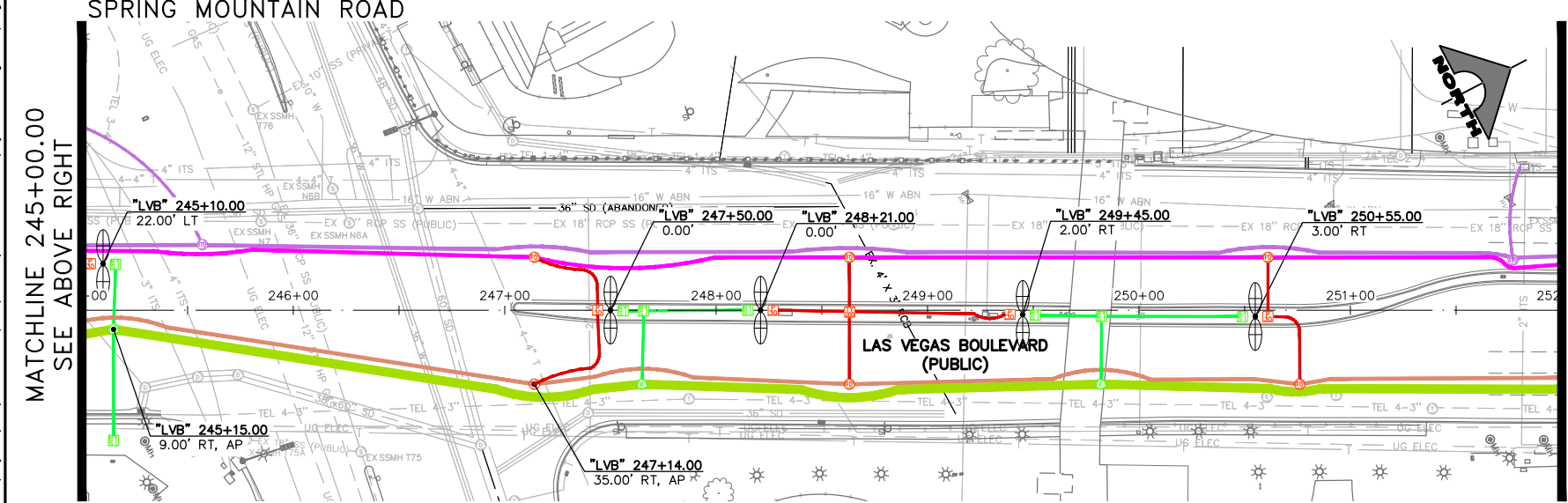
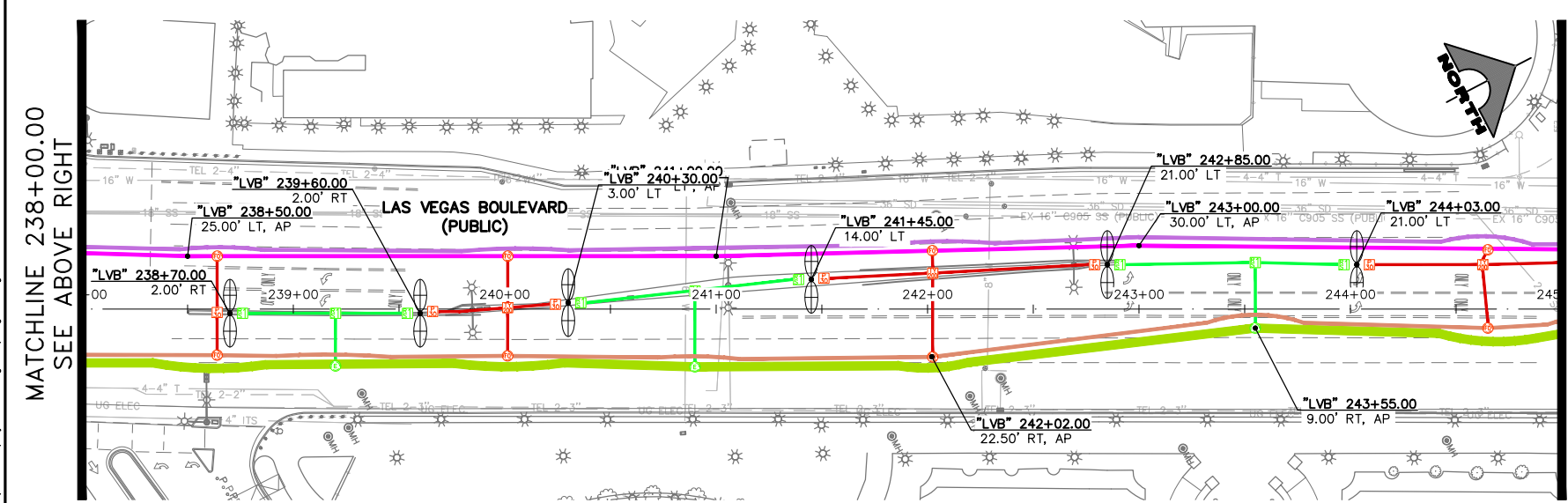
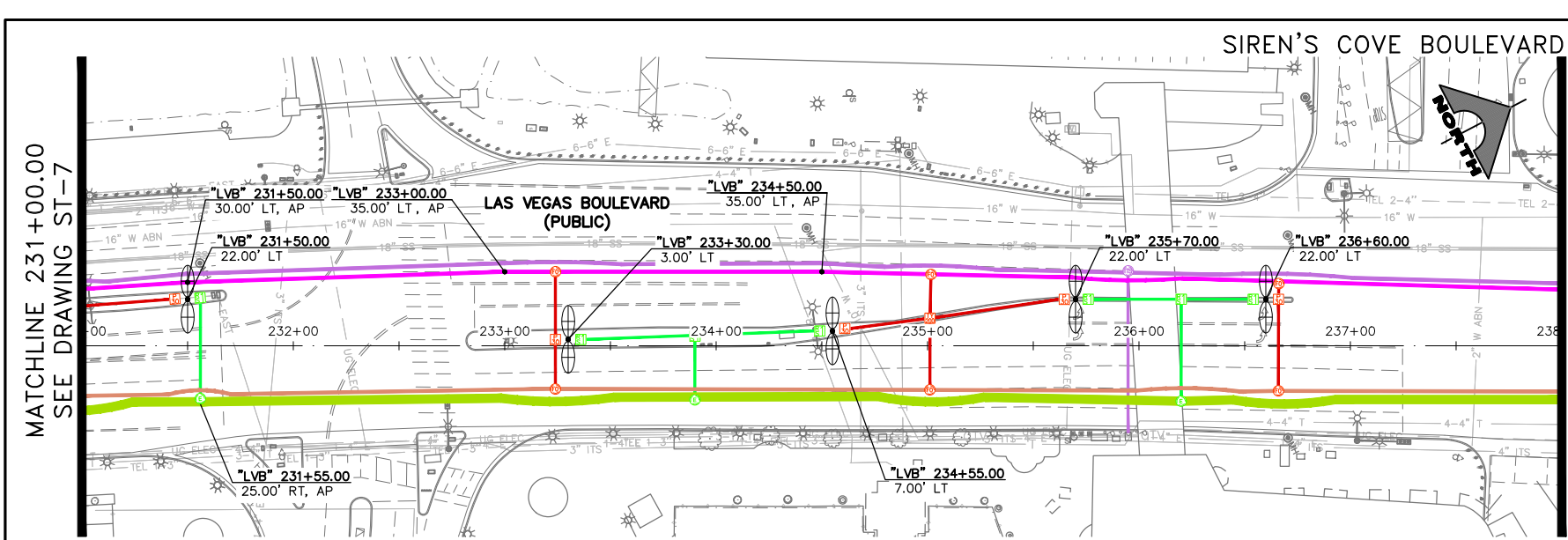
**LAS VEGAS BOULEVARD**  
 COMMUNICATION/POWER ALIGNMENT  
 "LVB" 210+00 TO "LVB" 231+00  
 CLARK COUNTY, NEVADA, DEPARTMENT OF PUBLIC WORKS

PROJECT No: 500-897-LV DRAWN BY: JAY  
 DESIGNED BY: JAY CHECKED BY: TAM  
 APPROVED BY: \_\_\_\_\_



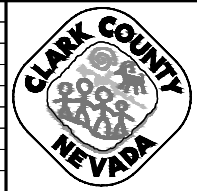
SCALE: HORIZ: 1" = 40'  
 VERT: NONE  
 FIELD BOOK: \_\_\_\_\_  
 DRAWING NO. ST-7  
 SHT. 7 OF 9  
 L-XXXX

04-03-23 12:40:24 F:\Projects\500-897-LV\DWG\Exhibits\Communication Display Welcome Sign to Spring Mt\CommDisplayWelcomeSignToSpringMt.dwg



- LEGEND**
- COMMUNICATION DUCT BANK 'A'
  - COMMUNICATIONS/POWER DUCT BANK
  - FAST DUCT BANK
  - COMMUNICATION DUCT BANK 'B'
  - POWER LATERAL
  - COMMUNICATIONS LATERAL

F:\Projects\500\500-897-LV\DWG\Exhibits\Communication Display Welcome Sign to Spring Mt\CommDisplayWelcomeSignToSpringMnt.dwg  
 04-03-23 12:40:39 J:\vason



**LAS VEGAS BOULEVARD**  
 COMMUNICATION/POWER ALIGNMENT  
 "LVB" 231+00 TO "LVB" 252+00  
 CLARK COUNTY, NEVADA, DEPARTMENT OF PUBLIC WORKS

PROJECT No: 500-897-LV DRAWN BY: JAY  
 DESIGNED BY: JAY CHECKED BY: TAM  
 APPROVED BY: \_\_\_\_\_

SCALE: HORIZ: 1" = 40'  
 VERT: NONE  
 FIELD BOOK: \_\_\_\_\_  
 DRAWING NO. ST-8  
 SHT. 8 OF 9  
 L-XXXX

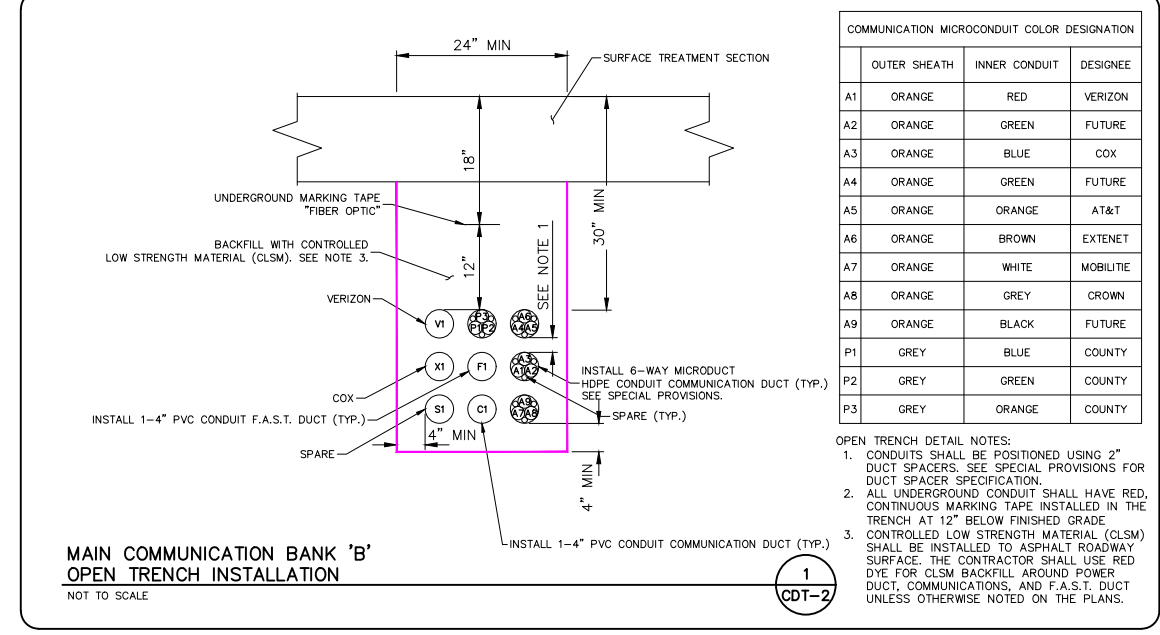
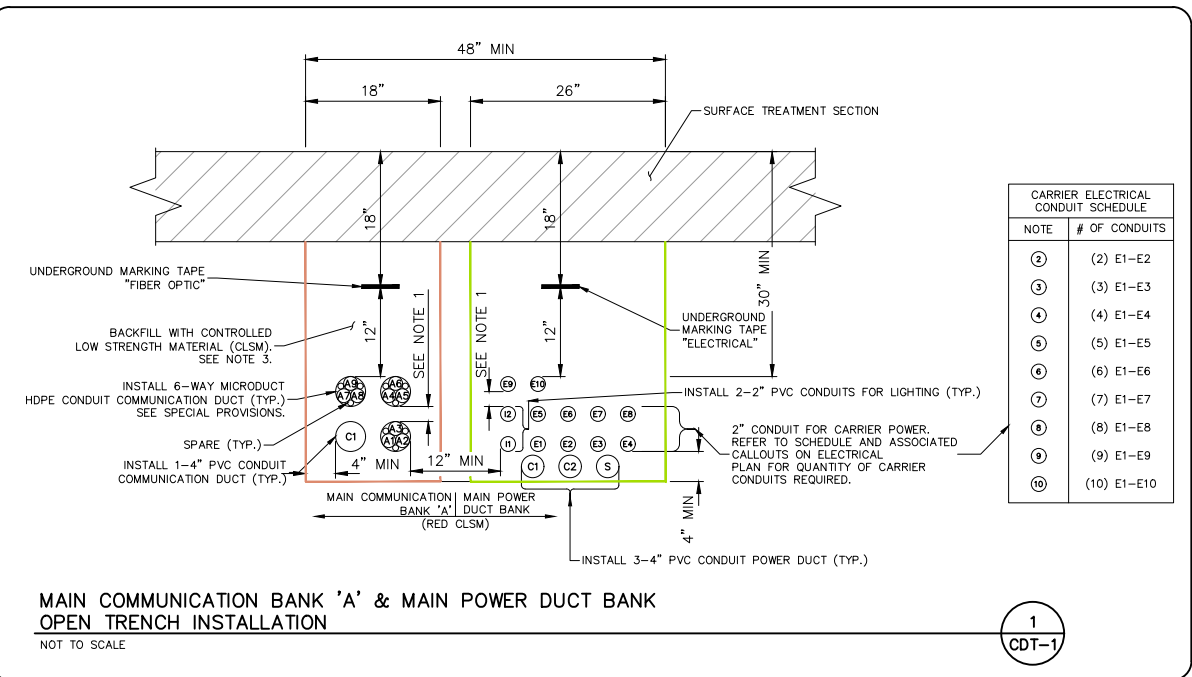
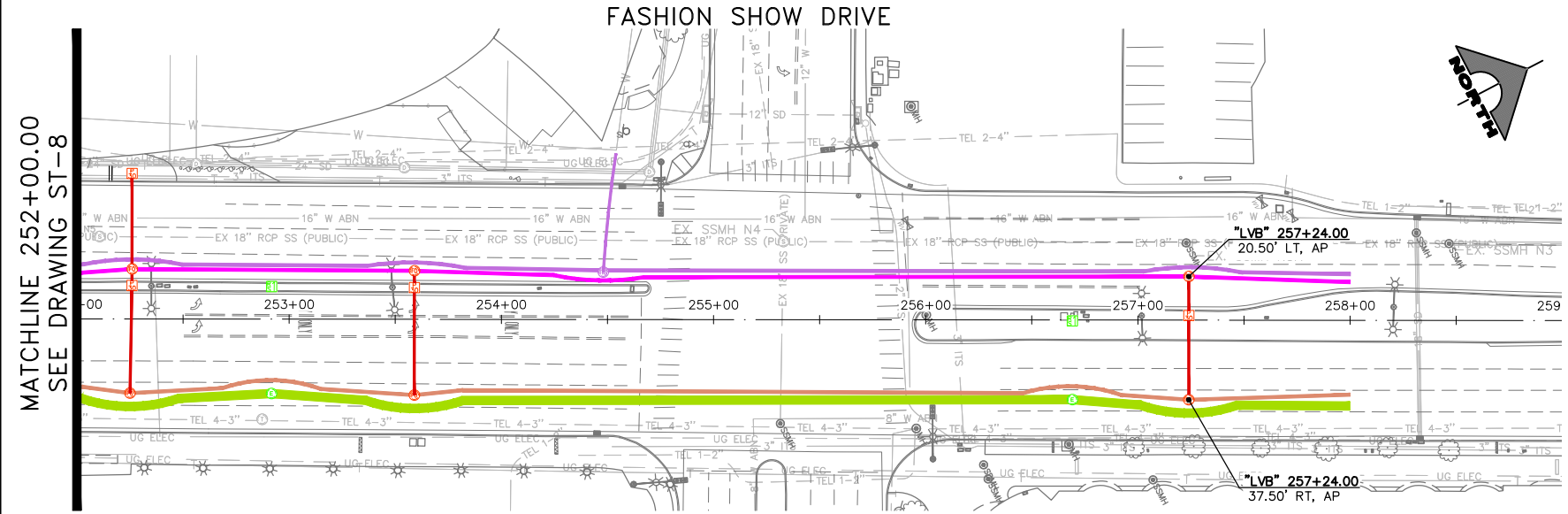
REV. NO.	DATE	DESCRIPTION	APPROVED



1555 S. RAINBOW BLVD.  
 LAS VEGAS, NV 89146  
 T: 702.804.2000  
 F: 702.804.2299  
 gcvengineering.com



MATCHLINE 252+00.00  
SEE DRAWING ST-8

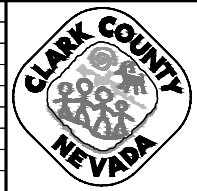


**LEGEND**

- COMMUNICATION DUCT BANK 'A'
- COMMUNICATIONS/POWER DUCT BANK
- FAST DUCT BANK
- COMMUNICATION DUCT BANK 'B'
- POWER LATERAL
- COMMUNICATIONS LATERAL

J:\Projects\500-897-LV\DWG\Exhibits\Communication Display Welcome Sign to Spring Mt\CommDisplayWelcomeSignToSpringMt.dwg

REV. NO.	DATE	DESCRIPTION	APPROVED



**LAS VEGAS BOULEVARD**  
 COMMUNICATION/POWER ALIGNMENT  
 "LVB" 252+00 TO "LVB" 259+00  
 CLARK COUNTY, NEVADA, DEPARTMENT OF PUBLIC WORKS

PROJECT No: 500-897-LV DRAWN BY: JAY  
 DESIGNED BY: JAY CHECKED BY: TAM  
 APPROVED BY: \_\_\_\_\_

**GCV**  
 ENGINEERS SURVEYORS  
 1555 S. RAINBOW BLVD.  
 LAS VEGAS, NV 89146  
 T: 702.804.2000  
 F: 702.804.2299  
 gcvengineering.com

SCALE  
 HORIZ: 1" = 40'  
 VERT: NONE  
 FIELD BOOK

DRAWING NO.  
**ST-9**  
 SHT. 9 OF 9  
 L-XXXX