

Lone Mountain Park



April 09, 2007

Area 2 Sports Complex



JWZUNINO & ASSOCIATES
 LANDSCAPE ARCHITECTURE • LAND PLANNING
 RESORT PLANNING • GOLF COURSE DESIGN
 3191 S Jones Blvd • Las Vegas, NV 89146
 Phone: (702) 253-9390 • Website: <http://www.jwzunino.com>

8' CONCRETE MULTI-USE TRAIL

DECORATIVE MOUNDING

DAY USE PICNIC AREA WITH SHELTER, TYP.



RED COACH AVENUE

NORTH CONQUISTADOR STREET

RESTROOM BUILDING

LARGE GROUP PICNIC SHELTER

PARKING

LARGE GROUP PICNIC SHELTER

LARGE TOT LOT PLAY STRUCTURE WITH CAFÉ TABLES AND SHADE STRUCTURE

RESTROOM BUILDING

10' WIDE EQUESTRIAN TRAIL

8' CONCRETE MULTI-USE TRAIL

DAY USE PICNIC AREA WITH SHELTER, TYP.

DRY RIVERBED FEATURE

LARGE GROUP PICNIC SHELTER

HORSESHOE PITS

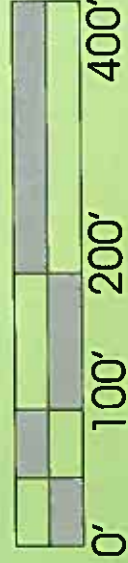
10' WIDE EQUESTRIAN TRAIL

EXISTING PARK BOUNDARY

MULTI-USE TRAIL AND EQUESTRIAN TRAIL CONNECTED TO AREA 5

Lone Mountain Park

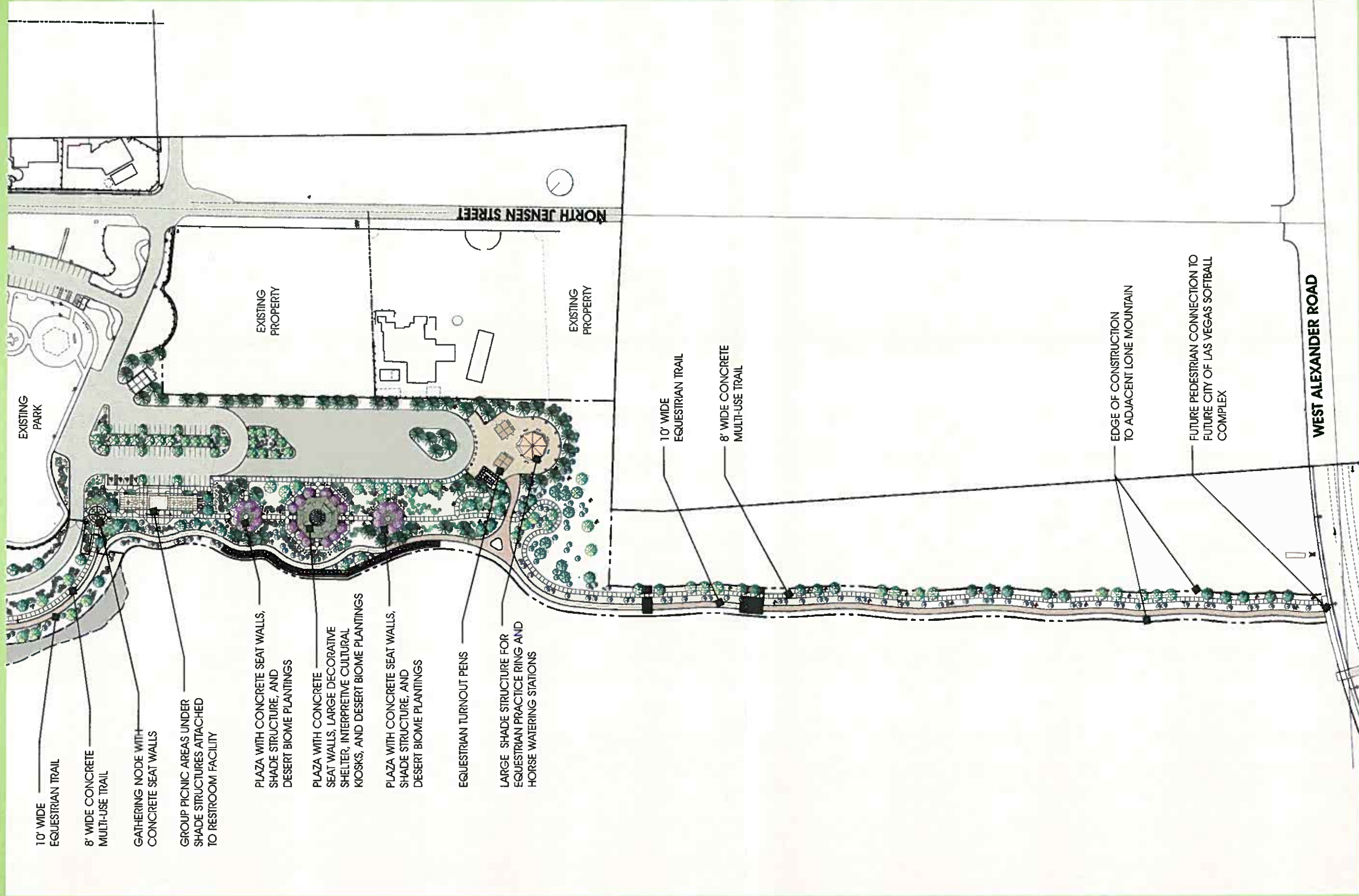
Area 4 Day Camping



April 09, 2007



JWZUNINO & ASSOCIATES
 LANDSCAPE ARCHITECTURE • LAND PLANNING
 RESORT PLANNING • GOLF COURSE DESIGN
 3191 S. Jones Blvd., Las Vegas, NV 89146
 Phone: (702) 253-9390 • Website: <http://www.jwzunino.com>



10' WIDE
EQUESTRIAN TRAIL

8' WIDE CONCRETE
MULTI-USE TRAIL

GATHERING NODE WITH
CONCRETE SEAT WALLS

GROUP PICNIC AREAS UNDER
SHADE STRUCTURES ATTACHED
TO RESTROOM FACILITY

PLAZA WITH CONCRETE SEAT WALLS,
SHADE STRUCTURE, AND
DESERT BIOME PLANTINGS

PLAZA WITH CONCRETE
SEAT WALLS, LARGE DECORATIVE
SHELTER, INTERPRETIVE CULTURAL
KIOSKS, AND DESERT BIOME PLANTINGS

PLAZA WITH CONCRETE SEAT WALLS,
SHADE STRUCTURE, AND
DESERT BIOME PLANTINGS

EQUESTRIAN TURNOUT PENS

LARGE SHADE STRUCTURE FOR
EQUESTRIAN PRACTICE RING AND
HORSE WATERING STATIONS

10' WIDE
EQUESTRIAN TRAIL

8' WIDE CONCRETE
MULTI-USE TRAIL

EDGE OF CONSTRUCTION
TO ADJACENT LONE MOUNTAIN

FUTURE PEDESTRIAN CONNECTION TO
FUTURE CITY OF LAS VEGAS SOFTBALL
COMPLEX

WEST ALEXANDER ROAD

NORTH JENSEN STREET

EXISTING
PROPERTY

EXISTING
PROPERTY

EXISTING
PARK



April 09, 2007



North

Lone Mountain Park *Area 5* Interpretive/Equine Staging



JWZUNINO & ASSOCIATES
 LANDSCAPE ARCHITECTURE • LAND PLANNING
 RESORT PLANNING • GOLF COURSE DESIGN
 3191 S. Jones Blvd. • Las Vegas, NV 89146
 Phone: (702) 259-9390 • Website: <http://www.jwzunino.com>



NATIVE PLANT DEMONSTRATION

LOCAL GEOLOGY AREA

MATH, SPELLING, SHAPE, AND COLORS AREA

CHILDREN'S DISCOVERY MAZE WITH ROCK CLIMBING WALL

ADJACENT RESIDENTIAL PROPERTY

OUTDOOR PERFORMANCE AREA WITH TERRACED SANDSTONE SEATING

TOT LOT (2-5 YR OLD) WITH FABRIC SHADE SHELTER

CLARK COUNTY HISTORY AREA WITH OVERHEAD METAL FRAME

PROPOSED PARKING

NATIVE MAMMAL DEMONSTRATION

GEOGRAPHY LEARNING AREA

SUNDIAL AREA AND COMPASS ORIENTATION

SOUTHWEST DESERT DEMONSTRATION GARDEN

MOUNDED LAWN PLAY AREA

SPORTS ACTIVITY PLAY AREA

TOT LOT (6-12 YR OLD) WITH FABRIC SHADE SHELTER

LARGE PICNIC PAVILION

RECYCLING LEARNING AREA

TRASH ENCLOSURE

EXISTING ENTRY DRIVE

RED COACH AVENUE

NORTH JENSEN STREET



April 09, 2007



JWZUNINO & ASSOCIATES
 LANDSCAPE ARCHITECTURE • LAND PLANNING
 RESORT PLANNING • GOLF COURSE DESIGN
 3191 S. Jones Blvd. • Las Vegas, NV 89146
 Phone: (702) 253-9390 • Website: <http://www.jwzunino.com>

Lone Mountain Park *Children's Discovery Zone* *Area 3*