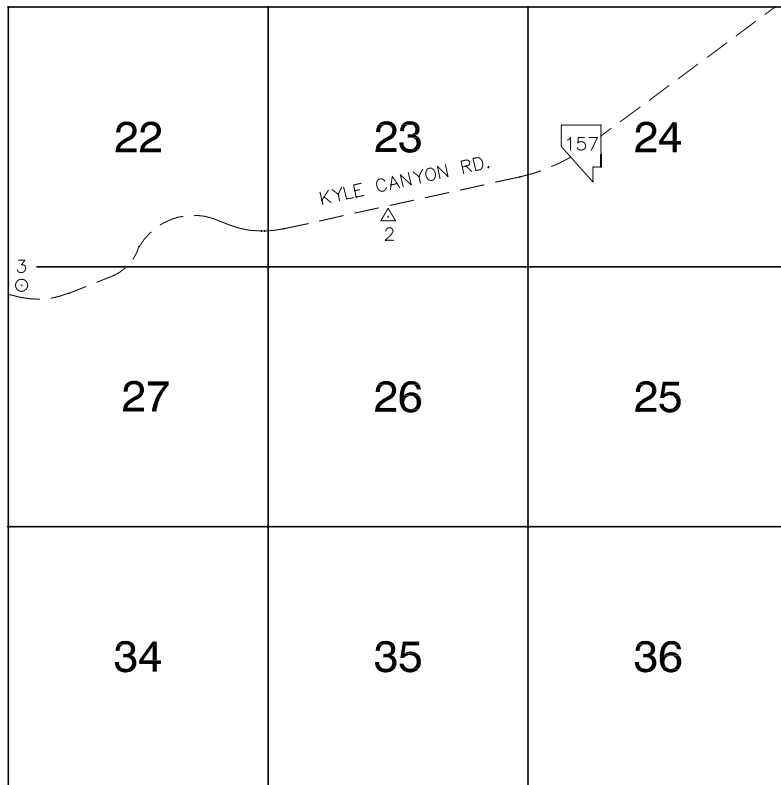


Township 19 South, Range 58 East Southeast Quarter



NORTH AMERICAN VERTICAL
DATUM OF 1988
- ALL ELEVATIONS IN METERS -

No.	STATION	ELEVATION (METERS)		DESCRIPTION
1				LOST 2003
2	6 GWM 1951	1378.661	F N D	4" USGS BRASS CAP IN A CONCRETE HEADWALL, SOUTH SIDE OF KYLE CANYON RD. ± 2.2 MILES WEST OF SCOTTIE RD.
3	3C98 27NNW6 2003	1463.351	S E T	RIVET AND ROUND ALUMINUM PLATE IN A CONCRETE HEADWALL, NORTH SIDE OF KYLE CANYON RD. ± 3.6 MILES WEST OF SCOTTIE RD.
4				
5				
6				
7				
8				
9				
10				
11				

CLARK COUNTY VERTICAL CONTROL v.2003

CLARK COUNTY SURVEYOR'S OFFICE
5051 SOUTH PARADISE ROAD
LAS VEGAS, NEVADA 89119
(702) 455-0640

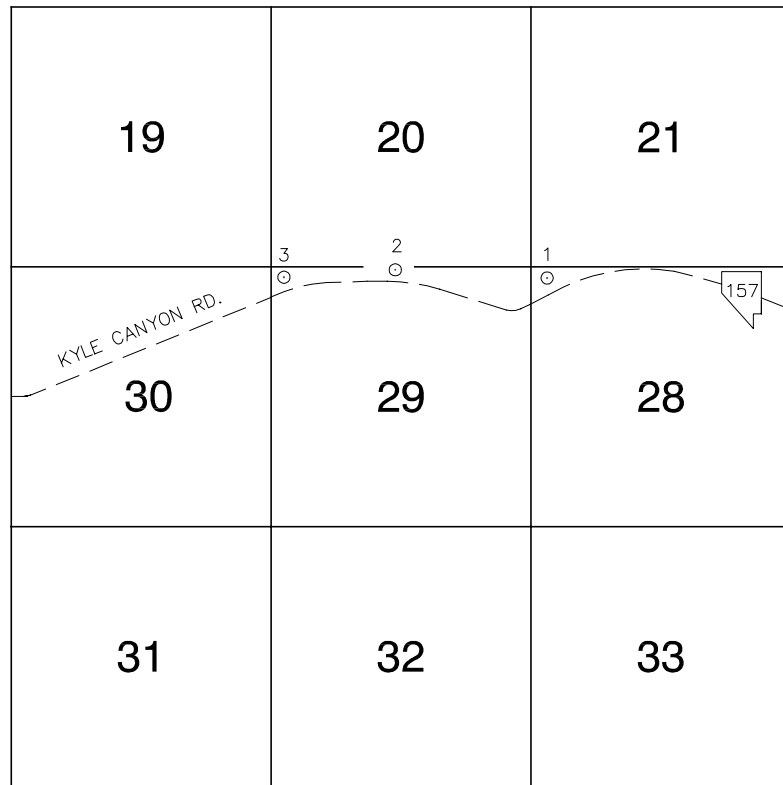
CONVERSION FACTOR:
METERS X $\left(\frac{39.37}{1200}\right)$ = U.S. SURVEY FEET

REVISED
08/01/2003

SHEET
1 OF 1

19-58
SE

Township 19 South, Range 58 East Southwest Quarter



NORTH AMERICAN VERTICAL
DATUM OF 1988
— ALL ELEVATIONS IN METERS —

No.	STATION	ELEVATION (METERS)	S E T	DESCRIPTION
1	3C98 28NWS 2003	1537.930	S E T	RIVET AND ROUND ALUMINUM PLATE IN THE CENTER OF A CONCRETE HEADWALL, NORTH SIDE OF KYLE CANYON RD. ± 0.2 MILES WEST OF MILE MARKER 10.
2	3C98 29N4 2003	1577.662	S E T	RIVET AND ROUND ALUMINUM PLATE IN A CONCRETE HEADWALL, NORTH SIDE OF KYLE CANYON RD. ± 0.1 MILES EAST OF MILE MARKER 09.
3	3C98 29NWS 2003	1606.253	S E T	RIVET AND ROUND ALUMINUM PLATE IN A CONCRETE HEADWALL, NORTH SIDE OF KYLE CANYON RD. ± 0.5 MILES EAST OF HARRIS SPRINGS RD.
4				
5				
6				
7				
8				
9				
10				
11				

CLARK COUNTY VERTICAL CONTROL v.2003

CLARK COUNTY SURVEYOR'S OFFICE
5051 SOUTH PARADISE ROAD
LAS VEGAS, NEVADA 89119
(702) 455-0640

CONVERSION FACTOR:
METERS X $\left(\frac{3937}{1200}\right)$ = U.S. SURVEY FEET

REVISED
08/01/2003

SHEET
1 OF 1

19-58
SW