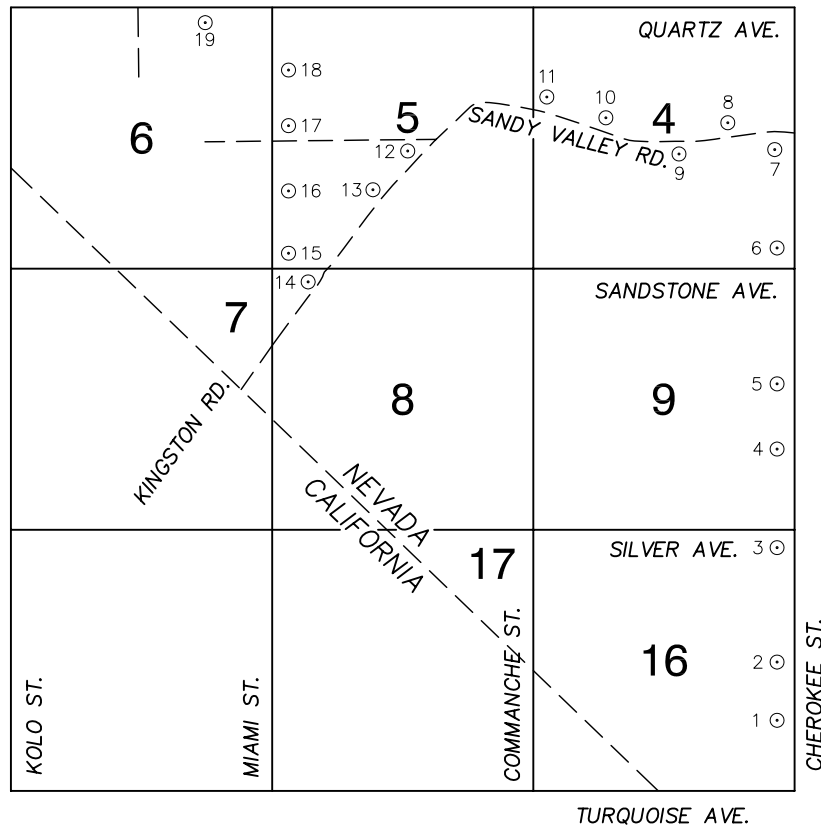


Township 25 South, Range 57 East Northwest Quarter



NORTH AMERICAN VERTICAL
DATUM OF 1988
- ALL ELEVATIONS IN METERS -

No.	STATION	ELEVATION (METERS)	DESCRIPTION
1	4C57 16SEE6 2004	792.626	RIVET AND ROUND ALUMINUM PLATE IN CONCRETE CYLINDER, SOUTHWEST CORNER OF CHEROKEE ST. AND AMBER AVE., 2' EAST OF FENCE CORNER.
2	4C57 16E4 2004	795.346	RIVET AND ROUND ALUMINUM PLATE IN CONCRETE CYLINDER, SOUTHWEST CORNER OF CHEROKEE ST. AND TOPAZ AVE., 1' EAST OF A CHAIN LINK FENCE AND 2' SOUTH OF A TELEPHONE CABLE BOX.
3	4C57 16NES 2004	799.167	RIVET AND ROUND ALUMINUM PLATE IN NORTHEAST CORNER OF A 3' X 3' CONCRETE ELECTRICAL PAD, SOUTHWEST CORNER OF CHEROKEE ST. AND SILVER AVE.
4	4C57 9SEE6 2004	801.500	RIVET AND ROUND ALUMINUM PLATE IN CONCRETE CYLINDER, NORTHWEST CORNER OF CHEROKEE ST. AND BUCKSKIN AVE., ± 50' WEST OF CHEROKEE ST.
5	4C57 9E4 2004	802.986	RIVET AND ROUND ALUMINUM PLATE IN CONCRETE CYLINDER, WEST SIDE OF CHEROKEE ST., 1/2 MILE NORTH OF SILVER AVE.
6	4C57 4SES 2004	809.883	RIVET AND ROUND ALUMINUM PLATE IN CONCRETE CYLINDER, NORTHWEST CORNER OF CHEROKEE ST. AND SANDSTONE AVE.
7	4C57 4E4 2004	818.279	RIVET AND ROUND ALUMINUM PLATE IN CONCRETE CYLINDER, SOUTHWEST CORNER OF CHEROKEE ST. AND SANDY VALLEY RD.
8	4C57 4E6 2004	812.339	RIVET AND ROUND ALUMINUM PLATE IN THE SOUTHWEST CORNER OF A CONCRETE PAD (SANDY VALLEY MATERIALS SIGN), NORTHWEST CORNER OF SANDY VALLEY RD. AND LORENZI ST.
9	4C57 4C4 2004	806.759	RIVET AND ROUND ALUMINUM PLATE IN CONCRETE CYLINDER, SOUTHWEST QUADRANT OF SANDY VALLEY RD. AND COOK ST., ± 28' SOUTH OF A POWER POLE, (# P55300).
10	4C57 4W6 2004	805.697	RIVET AND ROUND ALUMINUM PLATE IN CONCRETE CYLINDER, NORTHEAST CORNER OF SANDY VALLEY RD. AND TONOPAH ST., 2' SOUTH OF A CHAIN LINK FENCE.
11	4C57 4W4 2004	805.019	RIVET AND ROUND ALUMINUM PLATE IN CONCRETE CYLINDER, NORTHEAST CORNER OF SANDY VALLEY RD. AND COMMANCHE ST.

CLARK COUNTY VERTICAL CONTROL v.2003

CLARK COUNTY SURVEYOR'S OFFICE
5051 SOUTH PARADISE ROAD
LAS VEGAS, NEVADA 89119
(702) 455-0640

CONVERSION FACTOR:
METERS X $\left(\frac{3937}{1200}\right)$ = U.S. SURVEY FEET

REVISED 02/14/2005	SHEET 1 OF 2	25-57 NW
-----------------------	-----------------	---------------------

No.	STATION	ELEVATION (METERS)	DESCRIPTION	No.	STATION	ELEVATION (METERS)	DESCRIPTION
12	4C57 5C4 2004	799.691	S E T RIVET AND ROUND ALUMINUM PLATE IN CONCRETE CYLINDER, SOUTHWEST CORNER OF KINGSTON RD. AND JADE AVE.	25			
13	4C57 5S6 2004	795.101	S E T RIVET AND ROUND ALUMINUM PLATE IN CONCRETE CYLINDER, NORTHWEST CORNER OF KINGSTON RD. AND BEECH ST.	26			
14	4C57 8NNW6 2004	789.906	S E T RIVET AND ROUND ALUMINUM PLATE IN CONCRETE CYLINDER, SOUTHWEST CORNER OF KINGSTON RD. AND SANDSTONE AVE.	27			
15	4C57 5SWS 2004	788.598	S E T RIVET AND ROUND ALUMINUM PLATE IN SOUTHWEST CORNER OF A CONCRETE TELEPHONE PAD, NORTHEAST CORNER OF SANDSTONE AVE. AND MIAMI ST.	28			
16	4C57 5SWW6 2004	790.684	S E T RIVET AND ROUND ALUMINUM PLATE IN CONCRETE CYLINDER, NORTHEAST CORNER OF MIAMI ST. AND BEECH ST., 3' NORTH OF A POWER POLE.	29			
17	4C57 5W4 2004	793.703	S E T RIVET AND ROUND ALUMINUM PLATE IN CONCRETE CYLINDER, NORTHEAST CORNER OF MIAMI ST. AND JADE AVE., 2' NORTH OF A TELEPHONE CABLE BOX.	30			
18	4C57 5NWW6 2004	800.435	S E T RIVET AND ROUND ALUMINUM PLATE IN CONCRETE CYLINDER, NORTHEAST CORNER OF MIAMI ST. AND UTAH AVE., 2' NORTH OF A TELEPHONE CABLE BOX.	31			
19	4C57 6NNE6 2004	799.992	S E T RIVET AND ROUND ALUMINUM PLATE IN THE NORTHWEST CORNER OF A 15' X 12' CONCRETE PAD FOR A TRASH DUMPSTER AT 777 QUARTZ AVE., SOUTHEAST CORNER OF QUARTZ AVE. AND MOHAWK ST.	32			
20				33			
21				34			
22				35			
23				CLARK COUNTY VERTICAL CONTROL v.2003			
24				CLARK COUNTY SURVEYOR'S OFFICE 5051 SOUTH PARADISE ROAD LAS VEGAS, NEVADA 89119 (702) 455-0640		CONVERSION FACTOR: METERS X $\left(\frac{3937}{1200}\right)$ = U.S. SURVEY FEET	
				REVISED 02/14/2005	SHEET 2 OF 2	25-57 NW	